



## CAPWATCHER® SC

### INSPECTION SOLUTION FOR YOUR SPECIALTY CLOSURES

Special products require special solutions. The CapWatcher® SC systems are the perfect solution for every type of specialty closure: push-pull closures, sports caps, flip-toap closures, closures with multiple tamper bands or dosing inserts. With the CapWatcher® SC systems you get the security of flawless specialty closures.

FIND OUT  
MORE.



*Whether you require a solution for flip-top closures, push-pull closures or dosing inserts, CapWatcher® SC systems ensure a fast and objective inspection*

As **customized systems**, CapWatcher® SC solutions offer two guarantees. On the one hand, **your solution is specially adapted to your space conditions and the inspection needs** for your closure. Even a space-neutral integration can be realized. We can draw on more than 10 years of experience in the specialty closures market.

On the other hand, you get the security that typical defects in the hinges or joints, which commonly occur in specialty closures, will be reliably detected and sorted out.

In addition, thanks to extensive statistics, you have the information at hand to **realize process improvements**. On request, this information can be communicated directly to your ERP system in connection with orders generated there.

#### Closures

- \ Flip-top closures
- \ Sports caps (including push-pull closures)
- \ Tube closures
- \ Closures for the chemicals industry
- \ Oil closures
- \ Any type of specialty cap

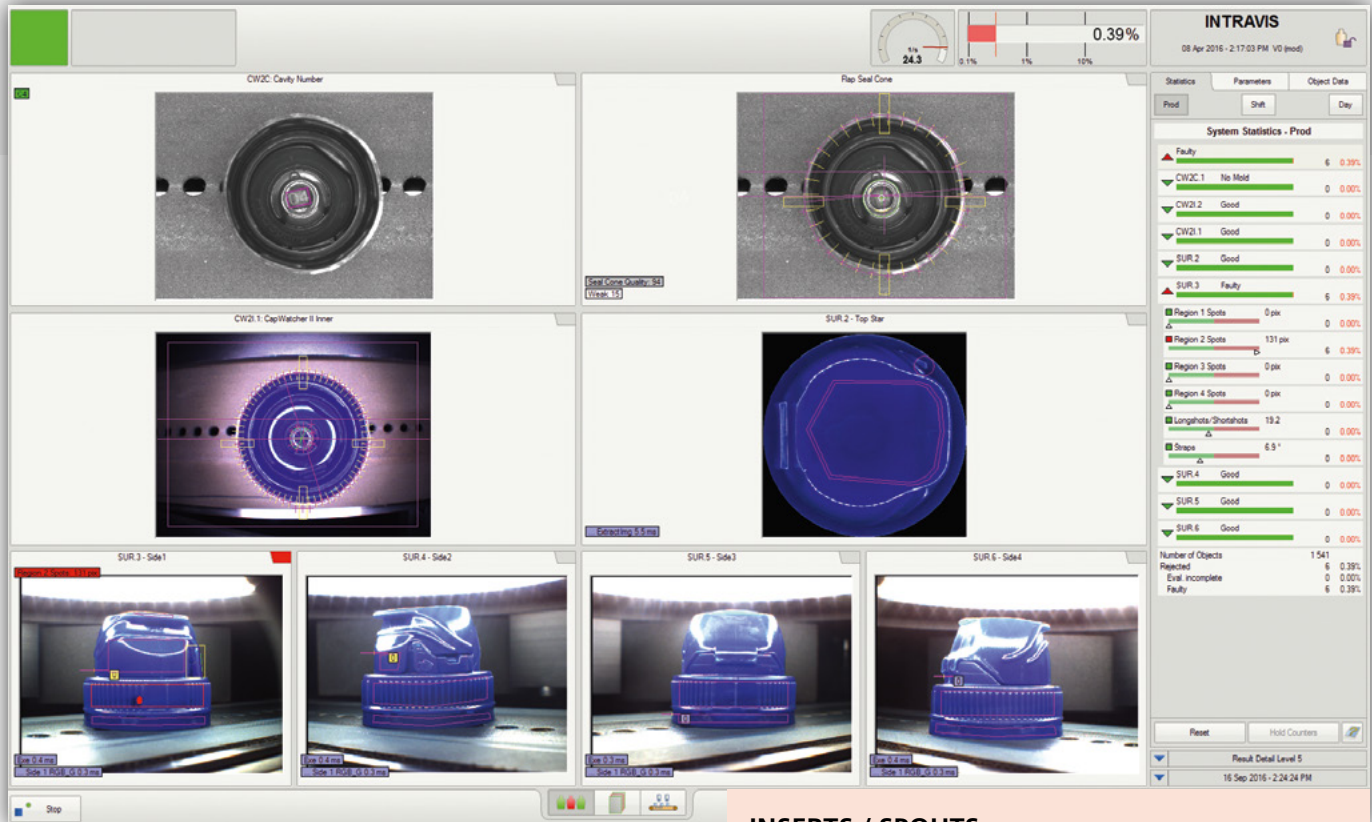
#### INSPECTION CRITERIA FOR CLOSURES

- \ Assembly faults
- \ Missing components
- \ Rotary position
- \ Closure position
- \ Horizontal long shots
- \ Vertical long shots
- \ Open and closed short shots
- \ Damaged pull tabs



# CAPWATCHER® SC

## INSPECTION SOLUTION FOR YOUR SPECIALTY CLOSURES



- \\ Scratches and pressure marks
- \\ Damaged or protruding flaps
- \\ Closure height
- \\ Diameter
- \\ Ovality
- \\ Sealing elements
- \\ Color deviations
- \\ Contaminations
- \\ Burn marks
- \\ Flow lines
- \\ Defects related to tamper-evident bands and tamper-evident closures
- \\ Missing or incomplete tamper-evident bands
- \\ Defects at hinges and joints
- \\ Cavity number reading
- \\ Micro-hole detection
- \\ Injection gate inspection
- \\ Printed image inspection
- \\ Promotional items
- \\ Liners

### INSERTS / SPOUTS

- \\ Dosing inserts
- \\ Liners
- \\ Child protection
- \\ Mouthpieces

### ADDITIONAL INSPECTION CRITERIA FOR INSERTS / SPOUTS

- \\ Missing components
- \\ Closure height (dosing inserts only)
- \\ Diameter and ovality
- \\ Flow lines

If you are seeking the perfect inspection solution for your specialty closure, look no further than the Cap-Watcher® SC system.