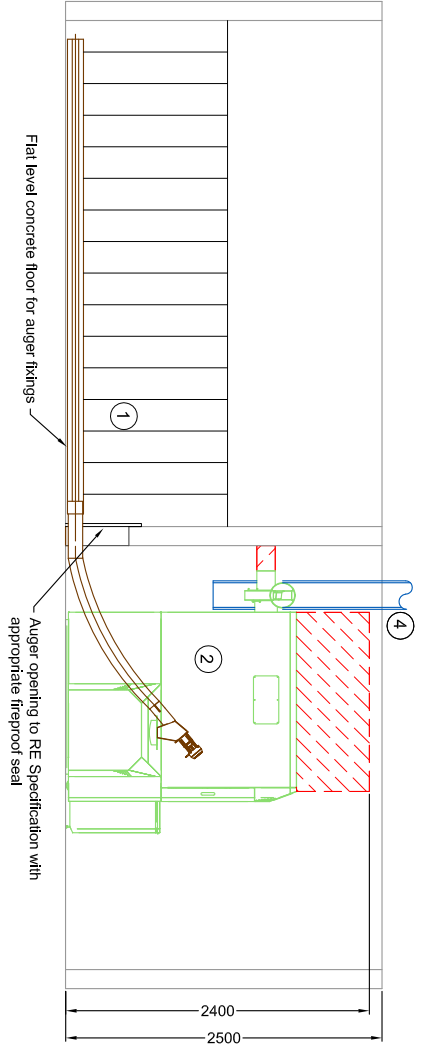
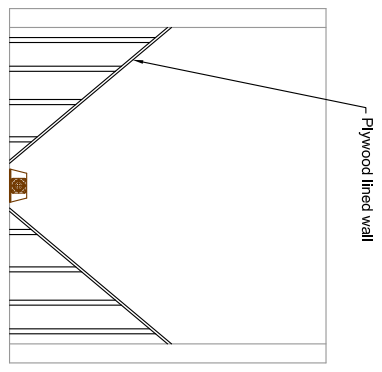


Maximum dimension of Fuel Store 4m Long
Plan View



View Through Store

Sectional View

- Bill of materials:**
- ① Pellet Store & fuel feeding system
 - ② Herz FireMatic pellet boiler
 - ③ Removable ash bins
 - ④ Chimney riser
 - ⑤ Buffer tank

Supporting documentation:

- RE Flue design guide
- RE buffer tank specification sheet
- RE buffer tank control description and sizing guide
- Boiler data sheets
- Cyclone grit arrester data sheet
- Wiring diagrams
- RE Hydraulic schematics
- RE design details
- RE Chip fuel store design guide
- RE Pellet hopper design guide

Pinrths are not required for the boilers or cyclone, provided there is adequate protection against flooding

Rural Energy provides this drawing for the purposes of locating the heating system and ancillary equipment, but takes no responsibility for the design of the fuel store or the plant room in any respect

Clearance for maintenance

Drawing Name
EXAMPLE LAYOUT
 FireMatic Boiler
 Pellets, Flexi auger, building integrated fuel store.

Boilers
 Herz FireMatic 130, 150, 180/199kW

Drawing Number
 RE_010-130-150-180-199.V1

Designed by
 PM/AP

Date
 26.01.12