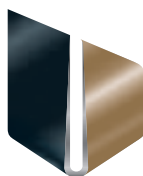




# Camina

Discover the passion of fire



german  
brand  
award  
2017  
winner

**Camina**<sup>®</sup>  
EXCLUSIVE FIREDESIGN

# The world is changing, but the flame remains.

Camina offers a wide range of total concepts for fireplaces. A uniquely diverse range of facades made of natural stone and storage stone is waiting for you, in classical or modern form.

Carmina always supplies top quality! This has been confirmed by independent testing institutes and the award as the best design brand in 2014/15 from Plus X Award® and the German Brand Award "Winner" in 2017.

For further information, please contact a tiled fireplace and air heating technician near you.

He/she will be happy to answer any additional questions you may have and to help you plan your Camina system.





Our specialist dealers will be happy to advise you – plan your dream fireplace together.

Find a dealer near you:

[www.camina-schmid.de/haendlersuche](http://www.camina-schmid.de/haendlersuche)



## Social Media

Follow us on social media – we're active participants and look forward to a lively exchange with you here as well. Let yourself be inspired and informed – you can network with us now at: Facebook, Pinterest, Instagram, etc.



## S14

A

Measurements: W 785 x H 1891 x D 1077 mm

Illustration: Storage concrete casing  
with design concrete

Surface finishing: Camina concrete paint

Fireplace insert: Ekko U 55(67)51 h

Model: Anthracite

Nominal output: 9 kW





# Heat storage

Comfortably warm and  
quickly mounted

# Heat for hours

**In a unique diversity Camina provides a quality range of components.**

On the following pages both storage stone and natural stone systems are presented.

The storage stone from Camina is a reinforced casting compound that still stores and gently gives off the radiated heat of the fireplace for many hours after combustion. Camina storage stone systems are easy to install and can be quickly removed for relocation.

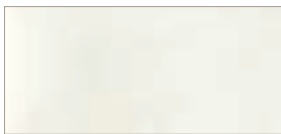
The storage stone can be painted in any desired colour. Camina exclusively uses Schmid firing technology as the "motor" of the system – on request also with water systems. A proven quality product made in Germany.



# The variety of natural stone

## Storage stone series

Natural stone is, as the name already denotes, a product which has formed in the natural world over millions of years, to which we can ,only' add the shape and the final touches. Deviations in the colour, structure and pattern are therefore perfectly normal. This means that any system produced from it is a unique specimen, which further underlines the true value of this product.



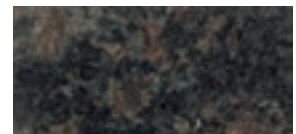
Estremos



Grigio



Jade



Marone



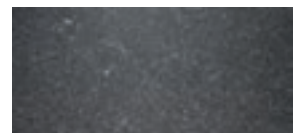
Mocca Creme



Nero



Sabbia



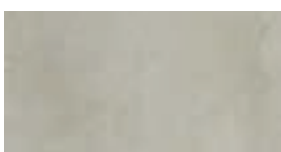
Nero matt,  
für S2 – S15

Please note! Deviations in colour, structure and pattern to the sample are perfectly normal!

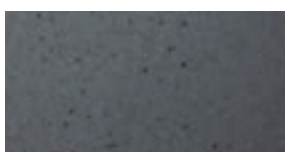
## Concrete versions

Please note that the storage stone systems have a rough, purist surface of storage concrete which is one of a kind due to its unique surface characteristics. Irregularities or colour variations in the material cannot be avoided during production. For this reason these surface of these systems is treated. If a uniform, regular surface is required, we offer three different finishing techniques in collaboration with our partner Brillux GmbH & Co. KG. Our design concrete-

te version is a storage concrete coloured throughout in anthracite with a treated surface that has been waxed, polished and therefore sealed. Water marks and other signs of wear are therefore almost completely prevented. For this reason the surface is easy to clean. One specific property of this material is that large holes form in the surface. This is a very special feature of the design concrete and is part of its unique structure.



Storage concrete (standard),  
finish recommended



Design concrete, for,  
for S2, S3, S9 – S19-Retro



Slate concrete,  
for S2

S2



A

Measurements: W 890 x H 1630 x D 585 mm  
Illustration: Storage concrete casing with slate concrete  
Surface finishing: Camina concrete paint  
Fireplace insert: Lina GT 4545 s  
Model: Kristall  
Nominal output: 5 kW



## Slate concrete

The Camina slate Concrete is a cast material, which is optically attractive like a natural slate claystone. Its special feature is that it feels very smooth and comfortable. Slate concrete doesn't splinter or flake and is highly abrasion resistant.



The Camina S2 appliance as a small storage fireplace offers a good alternative to the stove. The base element allows an easy operation of the higher placed fireplace and at the same time can be used as wood storage.





In the Camina S2, the flue gas connection can either be placed within the enclosure to the rear or through the hot air grilles on top.



Through an active rear ventilation – when no components of the building must be protected – no additional wall insulation is necessary. This gives a very low installation depth of only 585 mm.



### S2, in combination with facia concrete slate



A

- Measurements: W 710 x H 1630 x D 585 mm
- Illustration: Storage concrete casing with natural stone Mocca Creme
- Surface finishing: Camina concrete paint
- Fireplace insert: Lina GT 4545 h
- Model: Kristall
- Nominal output: 5 kW



**S3**



**A<sup>+</sup>**

Measurements: W 600 x H 1877 x D 600 mm  
Illustration: Storage concrete casing  
Surface finishing: Camina silicate coating  
Fireplace insert: Ekko 34(34)57 s  
Model: Kristall  
Nominal output: 7 kW



## S4 Front with straight apron



- Measurements: W 1100 x H 1830 x D 750 mm
- Illustration: Storage concrete casing with natural stone Grigio
- Surface finishing: Camina silicate coating
- Fireplace insert: Pano 5551 s
- Model: Chrome shiny
- Nominal output: 7 kW



## S4 Corner with inclined apron



- Measurements: W 900 x H 1850 x D 900 mm
- Illustration: Storage concrete casing with natural stone Marone
- Surface finishing: Camina silicate coating
- Fireplace insert: Pano 5551 s
- Model: Anthracite
- Nominal output: 7 kW



S4 – rustic and comfortable. The S4 is available as front or corner model. All versions are available with a storage apron. These are available with either a straight or a slanted apron.

## S5 Corner



Measurements: W 950 x H 1933 x D 901 mm  
Illustration: Storage concrete casing with natural stone Mocca Creme  
Surface finishing: Camina silicate coating  
Fireplace insert: Ronda 5557 h  
Model: Anthracite  
Nominal output: 7 kW



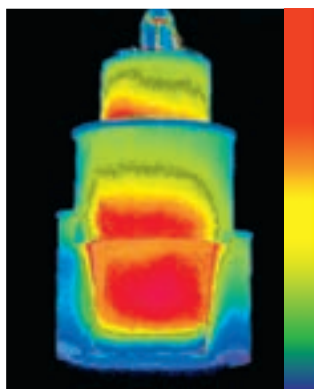


## S5 Front



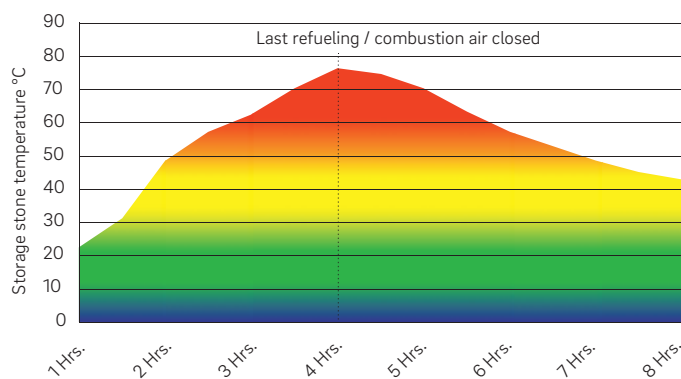
- Measurements: W 1066 x H 1933 x D 880 mm  
 Illustration: Storage concrete casing with natural stone Sabbia  
 Surface finishing: Camina silicate coating  
 Fireplace insert: Ronda 5557 s  
 Model: Anthracite  
 Nominal output: 7 kW

## Thermal image S5 Front



Mild, over hours lasting radiant heat! The thermal image shown left shows the distribution of heat within the fireplace. The temperature development and duration of heat storage are shown in the diagram.

## Diagramm heat storage



The amount of wood being burnt was 3 x 3 kg beech wood in this example. Thereafter the combustion air regulator was closed in the ember phase (as marked in the diagram) and the storage mass gave its heat off for hours.



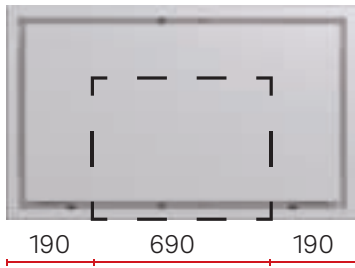
### S7 TV Low with Lina TV 6751 s/s



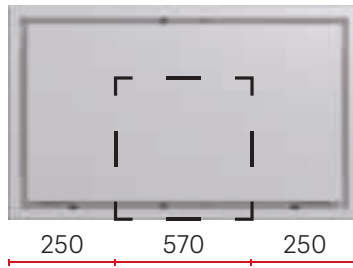
A

Measurements: W 1070 x H 1476 x D 650 mm  
Illustration: Storage concrete casing  
Surface finishing: Camina silicate coating  
Fireplace insert: Lina TV 6751 s/s  
Model: Kristall  
Nominal output: 9 kW

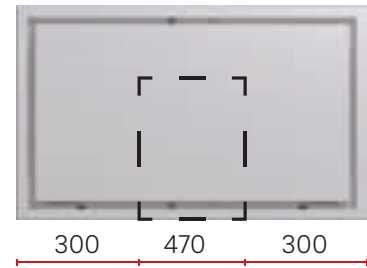
**S7 with Lina 6751  
Top view**



**S7 with Lina 5551  
Top view**



**S7 with Lina 4551  
Top view**



**S7 High with Lina 5551 s** 

Measurements: W 1070 x H 1776 x D 650 mm  
 Illustration: Storage concrete casing  
 Surface finishing: Camina silicate coating  
 Fireplace insert: Lina 5551 s  
 Model: Kristall  
 Nominal output: 7 kW



**S7 High with Lina 4551 s** 

Measurements: W 1070 x H 1776 x D 650 mm  
 Illustration: Storage concrete casing  
 Surface finishing: Camina silicate coating  
 Fireplace insert: Lina 4551 s  
 Model: Kristall  
 Nominal output: 7 kW



The S7 is a real all-rounder. In two installation heights three different widths of fireplace inserts can be installed – also as a tunnel version. With a Lina 6751 optional hydronic fireplace insert.

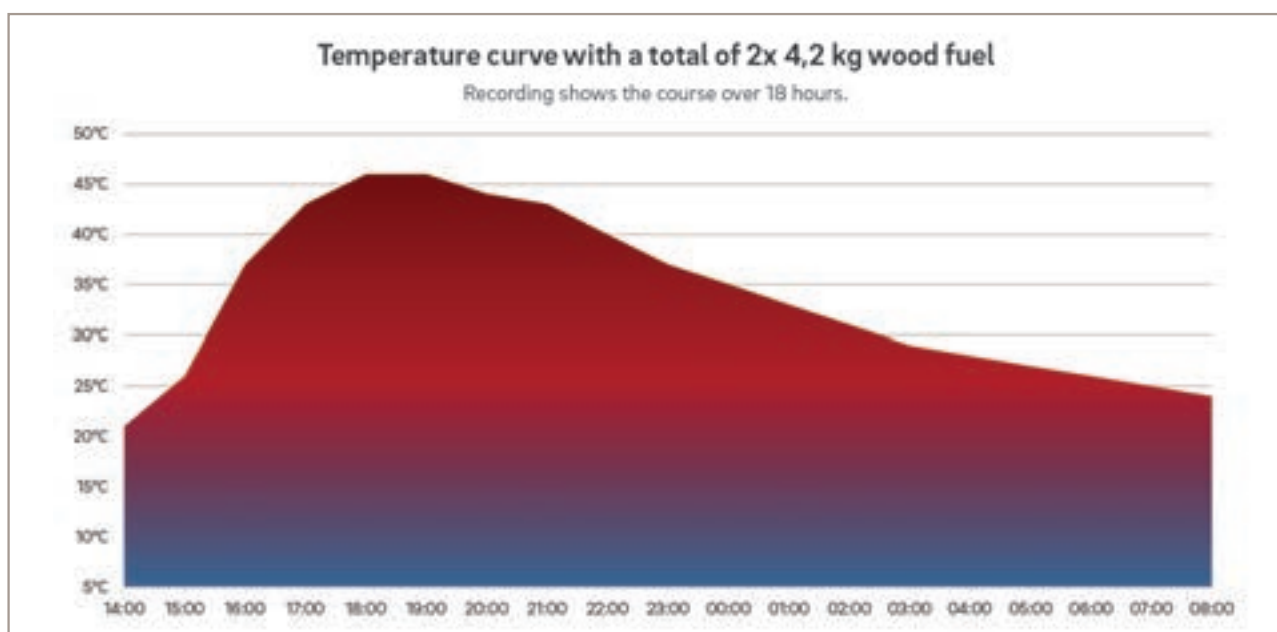
# Long-lasting heat for many hours

The closed variant of the S7 TV High-Power Bloc offers uniform long-lasting, pleasant radiated heat for 18 hours. This is achieved with inner walls made of high-quality fireclay cast plates and a rotary chimney made of cast fireclay. To define it more exactly, the total thermal capacity of the system given off to the installation room is an average of 0.94 kW. Of this 0.32 kW (34 %) is emitted via the window and 0.62 kW (66 %) via the surface of the system.

A major advantage here: Only a small quantity of 2 x 4.2 kg of wood per day is required. As a result, you protect not only the environment, but also your wallet.



## Surface temperature of the appliance







## S7 TV High Powerbloc



A

Measurements:	W 1070 x H 1826 x D 650 mm
Illustration:	Storage concrete casing
Surface finishing:	Camina silicate coating
Fireplace insert:	Lina TV 4551 s/s
Model:	Kristall
Nominal output:	7 kW



## S9 Low



Measurements: W 730 x H 1870 x D 730 mm  
 Illustration: Storage concrete casing with natural stone Nero matt  
 Surface finishing: Camina concrete paint  
 Fireplace insert: Ekko 45(45)57 s  
 Model: Kristall  
 Nominal output: 7 kW



S9 Low in combination with natural stone bench (with overhang)



S9 High in combination with natural stone bench (with overhang)



S9 Maxi in combination with natural stone bench (with overhang)

## S9 High



Measurements: W 730 x H 2538 x D 730 mm  
Illustration: Storage concrete casing with design concrete  
Surface finishing: Camina silicate coating  
Fireplace insert: Ekko 45(45)57 s  
Model: Kristall  
Nominal output: 7 kW



## S9 Maxi



Measurements: W 730 x H 2097 x D 730 mm  
Illustration: Storage concrete casing with design concrete  
Surface finishing: Camina concrete paint  
Fireplace insert: Ekko 45(45)80 h  
Model: Kristall  
Nominal output: 7 kW



## S10 Low



Measurements: W 1115 x H 1508 x D 730 mm

Illustration: Storage concrete casing with design concrete

Surface finishing: Camina silicate coating

Fireplace insert: Ekko R 67(45)51 h

Model: Kristall

Nominal output: 9 kW





S10 Low, convective hot air top outlet



S10 High, lateral convective hot air outlet



### S10 Low with with a fireplace benchrest in natural stone



- Measurements: W 1343 x H 1448 x D 867 mm
- Illustration: Storage concrete casing with natural stone Grigio
- Surface finishing: Camina silicate coating
- Fireplace insert: Ekko R 67(45)51 h
- Model: Anthracite
- Nominal output: 9 kW

# Fire meets water

## Two elements which could not be more oppositional.

Alongside comfortable radiant heat your storage stone system can simultaneously provide additional hot water for the central heating circuit.

Camina appliances equipped with Schmid fireplaces. Installations marked with a water symbol can be optionally equipped with water heat exchangers on request. Either with a water heat exchanger, which is mounted on the fireplace insert, or by a specific hydronic fireplace.

You will find further information on the tables on the last pages.





Fireplace insert: Ekko W L 67(45)51 h  
 Model: Water-exchanger, completely surrounded by water



Fireplace insert: Ekko L 67(45)51 h  
 Model: Top-mounted heat cylinder



**S10 High with a fireplace benchrest in natural stone**



- Measurements: W 1343 x H 1938 x D 867 mm
- Illustration: Storage concrete casing with natural stone Grigio
- Surface finishing: Camina silicate coating
- Fireplace insert: Ekko R 67(45)51 h
- Model: Anthracite
- Nominal output: 9 kW



### S10 High



Measurements: W 1115 x H 1998 x D 730 mm  
 Illustration: Storage concrete casing with design concrete  
 Surface finishing: Camina silicate coating  
 Fireplace insert: Ekko R 67(45)51 h  
 Model: Kristall  
 Nominal output: 9 kW



### S11



Measurements: W 1560 x H 1500 x D 900 mm  
 Illustration: Storage concrete casing with design concrete  
 Surface finishing: Camina silicate coating  
 Fireplace insert: Lina W 6751 s  
 Model: Kristall  
 Nominal output: 14,5 kW







### S12 Low



A+

Measurements:	W 690 x H 1580 x D 690 mm
Illustration:	Storage concrete casing
Surface finishing:	Camina silicate coating
Fireplace insert:	Ekko U 45(34)51 h
Model:	Anthracite
Nominal output:	4 kW



## S12 High



A+

Measurements: W 690 x H 1890 x D 690 mm  
Illustration: Storage concrete casing  
Surface finishing: Camina concrete paint  
Fireplace insert: Ekko U 45(34)51 h  
Model: Anthracite  
Nominal output: 4 kW



S12 Low



S12 High



S12 Low with natural stone bench  
(with overhang)



S12 High with natural stone bench  
(with overhang)



S12 Low with 2. base



S12 High with design concrete



The diversity of the S12 enables an optimum adaptation to the room height, furnishing and desired operation with a generous fire – regardless of which of the variants you choose, you never have to sacrifice a generous fire.

## S13 with natural stone bench A

Measurements: W 1080 x H 1892 x D 905 mm

Illustration: Storage concrete casing with natural stone Nero

Surface finishing: Camina concrete paint

Fireplace insert: Ekko U 67(45)51 h

Model: Anthracite

Nominal output: 9 kW





## With natural stone bench (with overhang)

For those who like it elegant, the considerably narrower and lighter natural stone benches are just the right thing. Available for the storage stone systems S9, S12, S13, S14 and S15.



### Please note:

Natural stone is, as the name already denotes, a product which has formed in the natural world over millions of years, to which we can 'only' add the shape and the final touches. Deviations in the colour, structure and pattern are therefore perfectly normal. This means that any system produced from it is a unique specimen, which further underlines the true value of this product.



S13 with natural stone bench  
(with overhang)



S14 with natural stone bench  
(with overhang)



S15 with natural stone bench  
(with overhang)

## S13 hinge door

A

Measurements: W 900 x H 1892 x D 815 mm

Illustration: Storage concrete casing with design concrete

Surface finishing: Camina metallic effect

Fireplace insert: Ekko U 67(45)51 s

Model: Anthracite

Nominal output: 9 kW



## Bar variant

The Camina S13 with Ekko U 67(45)51 is available in a swivelling model with bars.



S13 hinge door with natural stone bench (with overhang)



### S13 with fireplace benchrest A

- Measurements: W 1019 x H 1842 x D 876 mm  
Illustration: Storage concrete casing with natural stone Nero  
Surface finishing: Camina silicate coating  
Fireplace insert: Ekko U 67(45)51 s  
Model: Anthracite  
Nominal output: 9 kW



### S14

A

Measurements: W 785 x H 1891 x D 1077 mm  
 Illustration: Storage concrete casing with design concrete  
 Surface finishing: Camina concrete paint  
 Fireplace insert: Ekko U 55(67)51 h  
 Model: Anthracite  
 Nominal output: 9 kW



### S14 with fireplace benchrest

A

Measurements: W 904 x H 1841 x D 1136 mm  
 Illustration: Storage concrete casing with natural stone Grigio  
 Surface finishing: Camina silicate coating  
 Fireplace insert: Ekko U 55(67)51 h  
 Model: Anthracite  
 Nominal output: 9 kW





## S15

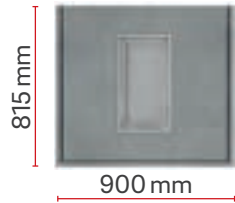
A

Measurements: W 784 x H 1890 x D 848 mm  
Illustration: Storage concrete casing with design concrete  
Surface finishing: Camina concrete paint  
Fireplace insert: Ekko U 55(45)51 h  
Model: Anthracite  
Nominal output: 9 kW

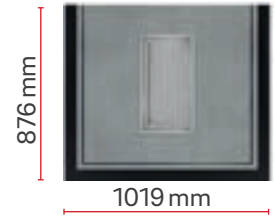
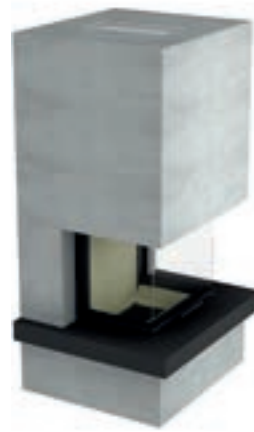
# One Stil – many Looks

The 'Storage Ekkos' with a three-sided view of the fire (Ekko U) available in various heights and widths – with and without fireplace benchrests.

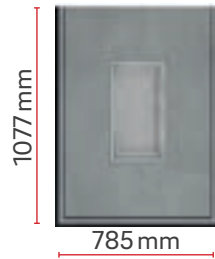
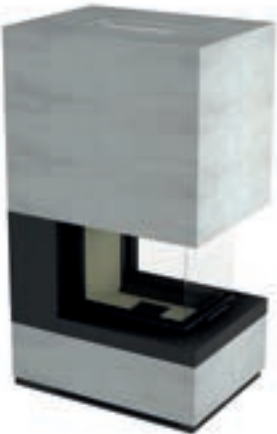




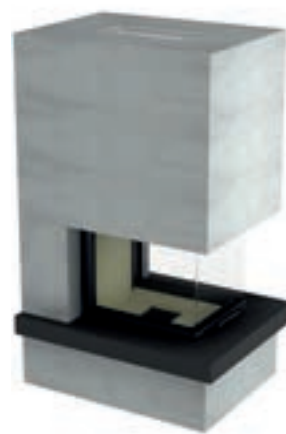
S13 with design concrete  
View / Top view



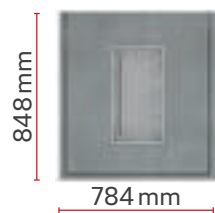
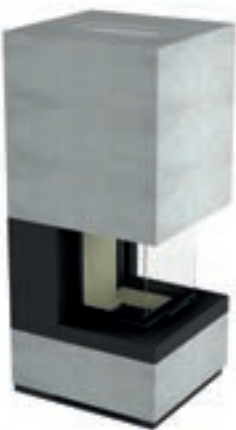
S13 with a fireplace benchrest  
View / Top view



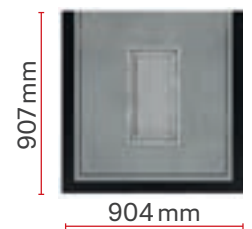
S14 with design concrete  
View / Top view



S14 with a fireplace benchrest  
View / Top view



S15 with design concrete  
View / Top view



S15 with a fireplace benchrest  
View / Top view



## S16



A+

Measurements: W 608 x H 1580 x D 572 mm  
Illustration: Storage concrete casing  
Surface finishing: Camina silicate coating  
Fireplace insert: Ekko U 45(34)51 h  
Model: Anthracite  
Nominal output: 4 kW

### S16 with Base H 310 mm



Measurements: W 608 x H 1890 x D 572 mm  
Illustration: Storage concrete casing  
Surface finishing: Camina concrete paint  
Fireplace insert: Ekko U 45(34)51 h  
Model: Anthracite  
Nominal output: 4 kW



S16 with base  
H 230 mm



S16 with base  
H 310 mm



S16 with podium  
H 310 mm



## S17

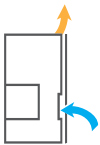


A

Measurements: W 835 x H 1617 x D 630 mm  
Illustration: Storage concrete casing  
Surface finishing: Camina concrete paint  
Fireplace insert: Ekko R 55(34)51 h  
Model: Kristall  
Nominal output: 5 kW



## Rear ventilated wall panel



Through an active rear ventilation – when no components of the building must be protected – no additional wall insulation is necessary. This allows the Camina appliances to be installed flush with the wall. The S17 can be constructed either left or right sided.



### S17 with 2. base

Measurements: W 835 x H 1967 x D 630 mm  
 Illustration: Storage concrete casing  
 Surface finishing: Camina concrete paint  
 Fireplace insert: Ekko L 55(34)51 h  
 Model: Kristall  
 Nominal output: 5 kW



### S18-Retro



Measurements:	W 998 x H 1550 x D 629 mm
Illustration:	Storage concrete casing
Surface finishing:	Camina silicate coating
Fireplace insert:	Lina 6757 s
Model:	Kristall
Nominal output:	9 kW



### S19-Retro



Measurements:	W 739 x H 1748 x D 550 mm
Illustration:	Storage concrete casing
Surface finishing:	Camina silicate coating
Fireplace insert:	Lina GT 4557 h
Model:	Kristall
Nominal output:	5 kW





### S18-Retro with bench

Measurements: W 1561 x H 1621 x D 745 mm

Illustration: Storage concrete casing with design concrete bench left \*

Surface finishing: Camina silicate coating

Fireplace insert: Lina 6757 h

Model: Kristall

Nominal output: 9 kW

### S19-Retro with wood box

Measurements: W 739 x H 1748 x D 550 mm

Measurements wood box: W 740 x H 459 x D 550 mm

Illustration: Storage concrete casing with design concrete and wood box

Surface finishing: Camina silicate coating

Fireplace insert: Lina GT 4557 h

Model: Kristall

Nominal output: 5 kW



## Design concrete

An option in high demand for virtually all systems is the model with waxed design concrete. The surface is sealed with it. Water stains or traces of any kind are almost completely rejected. The surface is smooth and very easy to maintain.

\* also available for the right side.





## S20-Retro

A

Measurements: W 890 x H 1799 x D 890 mm  
 Illustration: Storage concrete casing  
 Surface finishing: Camina silicate coating  
 Fireplace insert: Ekko 45(45)57 s  
 Model: Kristall  
 Nominal output: 7 kW

i

The Camina S20-Retro can be installed both in a corner and in front of a wall at a minimum distance of 120 mm. This is made possible by its simple and yet sophisticated shape and the flexible flue pipe connection. For the corner model, a cover plate made of storage mass is also available.





### S21 GO-Line (with rear connection) A+

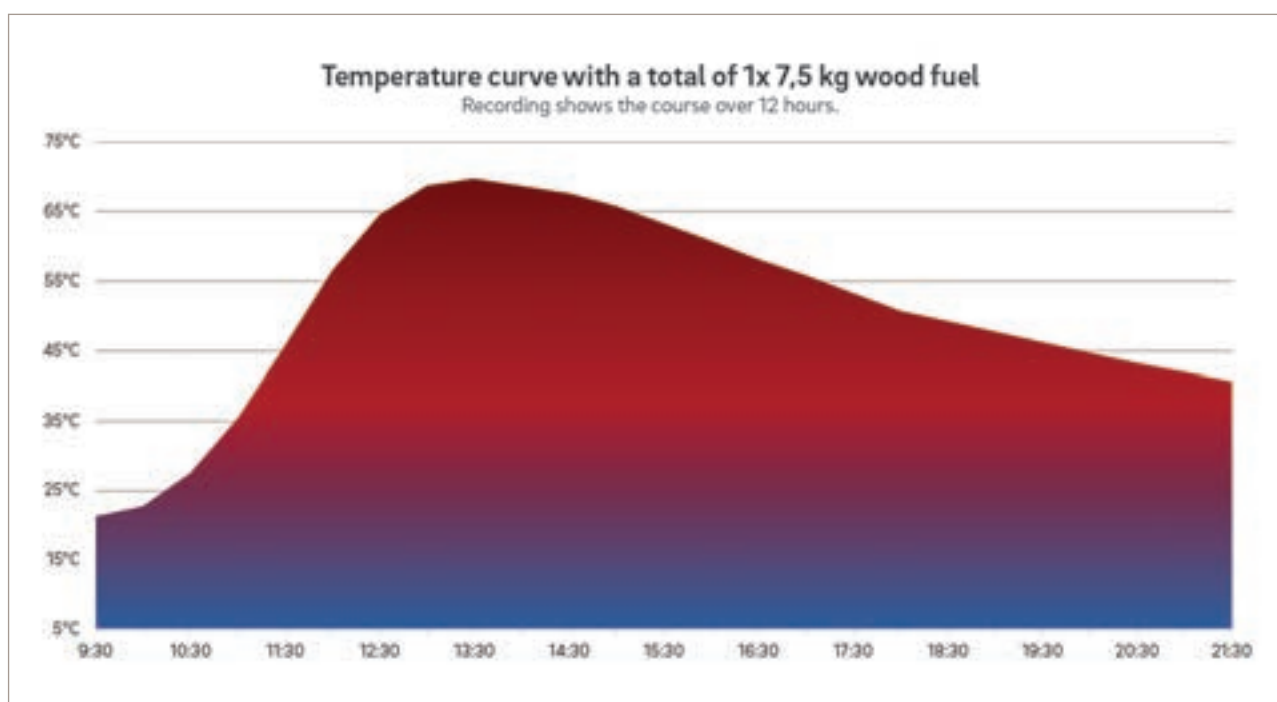
Measurements: Ø 615 x H 1992 mm  
Illustration: Storage concrete casing  
Surface finishing: Camina silicate coating  
Fireplace insert: Ronda GO 4557 s  
Model: Kristall  
Nominal output: 2,2 kW



The S21 GO-Line has been tested as a storage fireplace according to DIN EN 15250. The heart of the heat storage system is the Ronda GO 4557 Kristall basic stove. As a result, firing with a wood quantity of just 1 x 7.5 kg is sufficient to achieve a pleasant, healthy heat emission for at least 12 hours.

The combination of a storage system and a basic stove is particularly well-suited for low-energy and KfW energy efficient homes.

## Surface temperature of the system





**S22 GO-Line (with rear connection) A+**

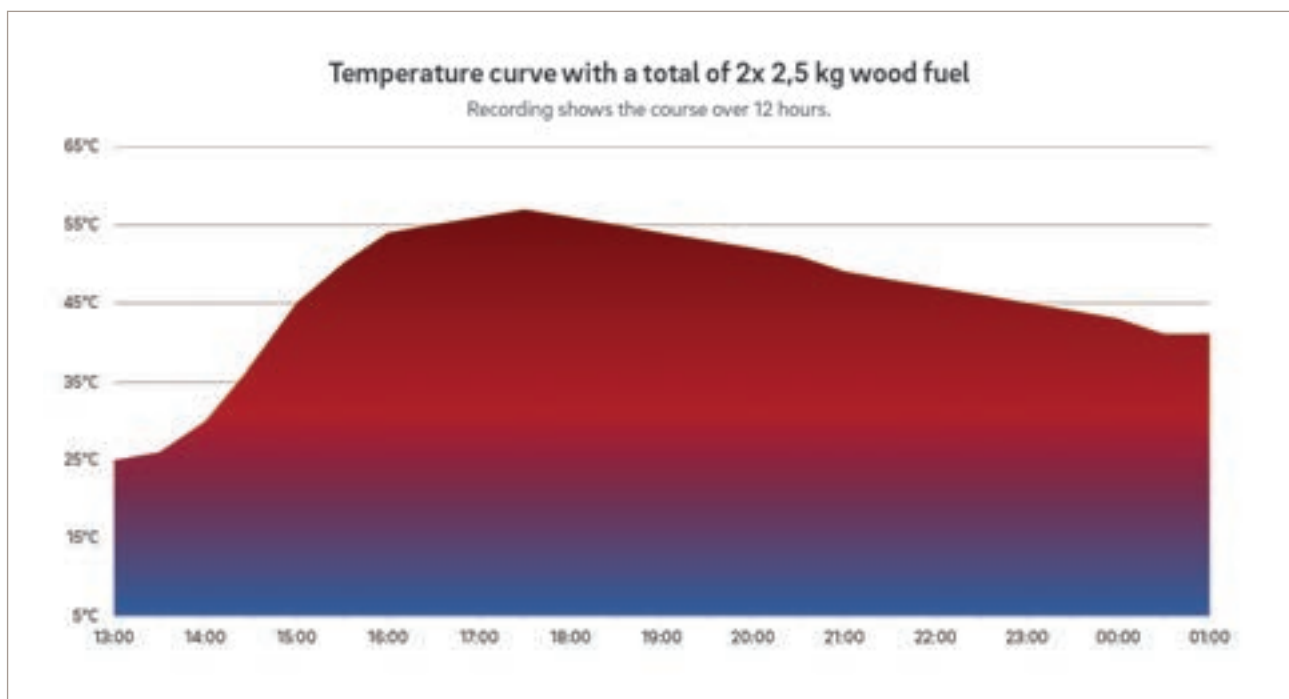
Measurements: W 700 x H 1972 x D 800 mm  
Illustration: Storage concrete casing  
Surface finishing: Camina silicate coating  
Fireplace insert: Profi GO 7 K  
Model: Kristall  
Nominal output: 1 kW



The efficient Camina basic stove line began with the S22 GO-Line. Here firing with a wood quantity of just 2 x 2,5 kg is sufficient to achieve a pleasant, healthy heat emission for at least 12 hours.

The combination of a storage system and a basic stove is particularly well-suited for low-energy and KfW energy efficient homes.

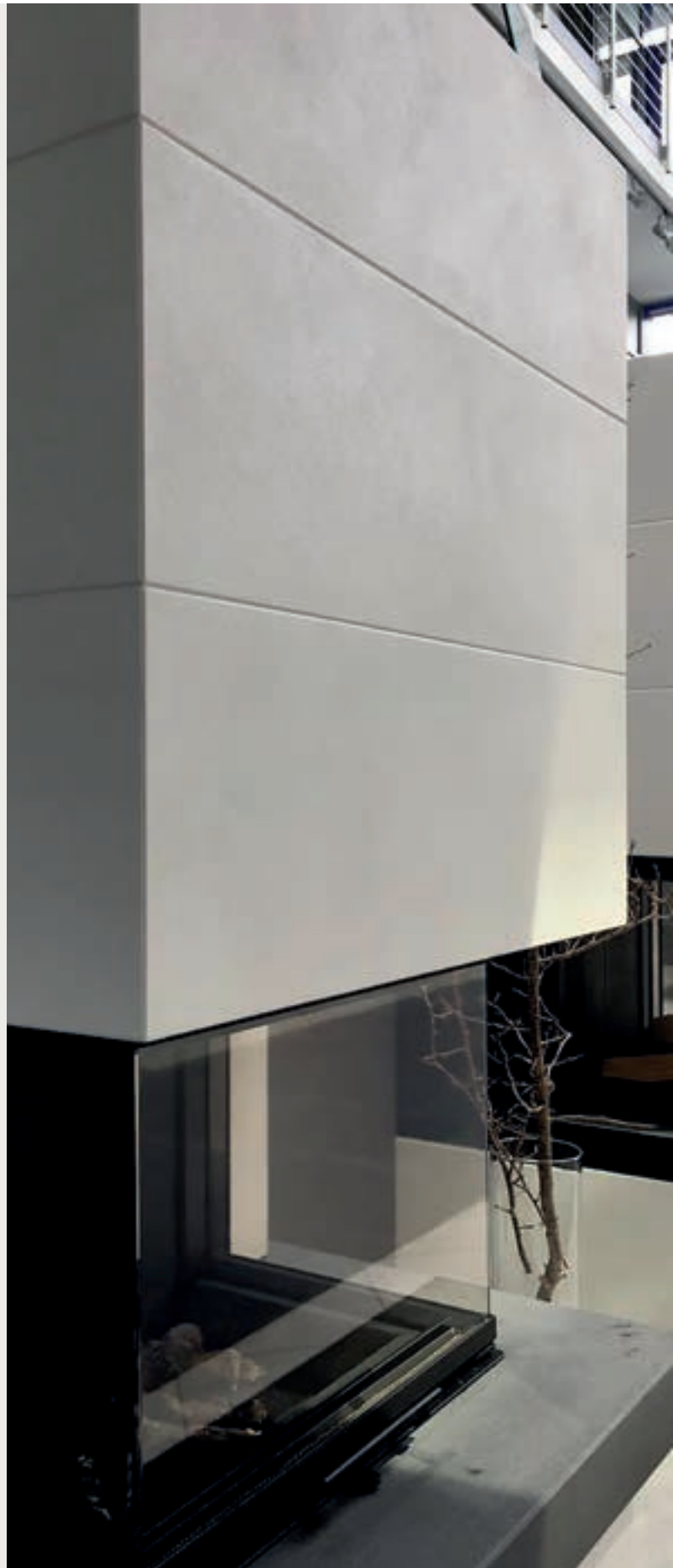
## Surface temperature of the system



# Surface finishing

What defines the distinctive look of Camina storage stone appliances, is the puristic surface made of storage concrete. Since this look is formed during the production, making each installation with its unique surface structure a unique piece.

Irregularities in the material are production-related properties. However, as a uniform, smooth surface is often desired, Camina & Schmid have developed three finishing techniques especially for storage stone systems in close cooperation with the company Brillux GmbH & Co. KG. Each of the three surface finishes is also available in a broad range of Brillux colours.





## Camina concrete paint

The concrete look of stone storage appliances can be restored easily with this application technique.

For those who prefer the purist design of these appliances, which are a result of the individual produced components, Camina is best suitable with its concrete look surface. In this way a concrete look can be established and production-related irregularities are covered.



## Camina silicate coating

With especially adapted, of high quality and solvent-free interior silicate paints the storage stone appliances can be individually designed.

In order to give your installation a fresh „splash of color“ we recommend the Camina silicate paint. Depending on your taste and living situation, you can choose this option in almost any color.



## Camina metallic effect

A particularly high-quality and exceptional effect is offered with Camina metallic effect technique which acts merely at first sight like an ordinary paint of the system. Because when exposed to light the particularity is revealed: A discreet metallic sheen. So your fireplace is always an eye-catcher!

This effect is caused through a metallic effect filling compound and achieves a high-quality system design. The color selection can be made by color guides.



# The Camina 3D fireplace planner

## Design your home

Camina offers the convenient way to plan a fireplace with the 3D program Palette@Home for at home. With this planning tool the living area can be quite easily drawn up true-to-scale via drag and drop on a computer, smart phone or tablet and designed according to your own desires and requirements.

You will find further information on our website:  
<https://camina-schmid.de/3d-kaminplaner/>





## S16



- Measurements: W 608 x H 1580 x D 572 mm  
Illustration: Storage concrete casing with front application oiled crude steel  
Surface finishing: Camina silicate coating  
Fireplace insert: Ekko U 45(34)51 h  
Model: Anthracite  
Nominal output: 4 kW



## S16 G



Measurements: W 608 x H 1580 x D 572 mm  
Illustration: Storage concrete casing  
Surface finishing: Camina silicate coating  
Fireplace insert: Ekko G U 45  
Model: Ground stainless stell anthracite  
Operating range: 2,0 – 8,2 kW (G20)  
2,9 – 8,2 kW (G25)  
1,7 – 5,2 kW (G30/31)



## Gas fireplace insert

Fire – re-experience  
tradition

Fire  
on Click!

# Discover the difference?

## Fire at the press of a button? It can be that easy!

Thanks to an intuitive display remote control, our gas fireplaces are on the highest technical level and are extremely easy to operate. The heart of the system are the deceptively realistic ceramic logs. A total of five burner nozzles are integrated in them that can be controlled with two separately adjustable burner groups.

As a result, the flame, and with it the heat supply, can be regulated as desired. As the new valve driver is a low-voltage solution, operation is also especially quiet and safe.



## S12 G Low



A

- Measurements: B 690 x H 1580 x D 690 mm  
Illustration: Storage concrete casing with design concrete  
Surface finishing: Camina silicate coating  
Fireplace insert: Ekko G U 45  
Model: Ground stainless stell anthracite  
Operating range: 2,0 – 8,2 kW (G20)  
2,9 – 8,2 kW (G25)  
1,7 – 5,2 kW (G30/31)



## S12 G Hoch



A

- Measurements: W 690 x H 1890 x D 690 mm  
Illustration: Storage concrete casing with design concrete  
Surface finishing: Camina silicate coating  
Fireplace insert: Ekko G U 45  
Model: Ground stainless stell anthracite  
Operating range: 2,0 – 8,2 kW (G20)  
2,9 – 8,2 kW (G25)  
1,7 – 5,2 kW (G30/31)



## S13 G

A

Measurements:	W 900 x H 1892 x D 815 mm
Illustration:	Storage concrete casing
Surface finishing:	Camina concrete paint
Fireplace insert:	Ekko G U 67
Model:	Ground stainless stell anthracite
Operating range:	3,7 – 9,2 kW (G20) 3,4 – 9,2 kW (G25) 4,9 – 8,6 kW (G30/31)



i

Impressive flame appearance that never becomes boring. Up until now that was only familiar from a wood fire. At level 9 of the remote control, we create realistic dynamics of the gas flame. In addition, the gas consumption is reduced on this level.

The new LED ambient lighting simulates a bed of glowing coals. It can be used separately when no heat is required or the flame appearance is to be given an even greater dimension.



## Täuschend echt

The ceramic logs with integrated tungsten filaments are unique. Contact with the flame causes the filaments to light up. That results in a deceptively realistic ember effect.





**S16 G with base H 310 mm**



- Measurements: W 608 x H 1890 x D 572 mm
- Illustration: Storage concrete casing
- Surface finishing: Camina silicate coating
- Fireplace insert: Ekko G U 45
- Model: Stahlblech anthrazit (matt)
- Operating range: 2,0 – 8,2 kW (G20)  
2,9 – 8,2 kW (G25)  
1,7 – 5,2 kW (G30/31)



The display provides information on: operation, control mode, malfunctions, room temperature, battery status, control status when switching on and off, day of the week, connection status, flame height and energy-saving mode

Flame appearance can be manually adjusted on 8 levels. The 9th level features automatic control for a dynamic flame appearance, room temperature control for optimum room ambience

The radio remote control communicates in two directions; it controls the gas fireplace and returns information if necessary

Programmable time programs



N1



Measurements: W 1600 x H 1290 x D 300 mm  
Natural stone: Blanco Nacarado with Negro Abanilla  
Fireplace insert: Lina 7363 h with frame  
Model: Kristall  
Nominal output: 9 kW





## Camina natural stone appliances (classic)

Classic natural stone  
appliances for a stylish  
kind of living

# Natural stone – always an unique piece

## A diverse programme of natural stone facades awaits you

Natural stone facades are mostly hand-made. However, only a very few are still masters of this craftsmanship. Especially for this reason, Camina & Schmid offers natural stone facades in unique special designs. There are virtually not limits to the creativity possible here. As a result, the size and shape of each system can be adapted to the room concept completely individually. And that makes the facade a unique product that enables you fulfil all your desires.

You will find further information on our website:  
[www.camina-schmid.de/kamine/stilkamine-klassisch](http://www.camina-schmid.de/kamine/stilkamine-klassisch)



Foto: Ofenbauer Axel und Andree Anders GbR/Hotel Tortue Hamburg/Bearbeitung: Camina & Schmid 2019

# The material variety

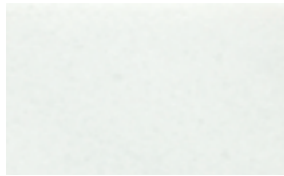
What is natural stone? Natural stone is, as the name already denotes, a product which has formed in the natural world over millions of years, to which we can 'only' add the shape and the final touches. In addition to limestone and marble, sandstone is also processed. Deviations in

the colour, structure and pattern are therefore perfectly normal. This means that any system produced from it is a unique specimen, which further underlines the true value of this product.

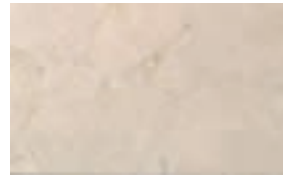
## Marble (polished surface)



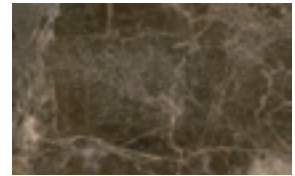
Blanco Carrara



Blanco Macael



Crema Marfil



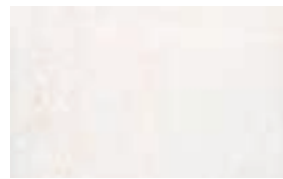
Marron Emperador



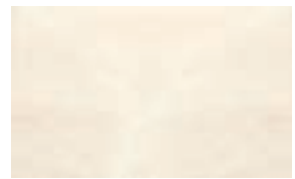
Negro Abanilla\*



Rojo Alicante\*



Rosa Claro\*



Rosa Crema\*

---

## Gritstone



Arenisca San Miguel\*\*



Blanco Nacarado



Caliza Moka



Travertino Romano

Additional natural stone variants are available on request!

Please note! Deviations in colour, structure and pattern from the sample are perfectly normal!

\* Surcharge / \*\* On request



**N1**



Measurements: W 1600 x H 1290 x D 300 mm  
Natural stone: Caliza Moka  
Fireplace insert: Lina 7363 h with frame  
Model: Kristall  
Nominal output: 9 kW



## Handcraft Art

The natural stone plates are pre-cut and then polished several times and sealed in modern water jet and laser cutting systems. However, the applications continue to be created with traditional craftsmanship. There are very few left today who are capable of producing this handcraft art. That makes each cladding unique and enables you to include even special wishes in your order.



N2



Measurements: W 1600 x H 1280 x D 545 mm

Natural stone: Rosa Crema

Fireplace insert: Lina 7363 h with frame

Model: Kristall

Nominal output: 9 kW



N5



Measurements: W 1260 x H 1070 x D 210 mm

Natural stone: Arenisca San Miguel

Fireplace insert: Lina 7363 h with frame

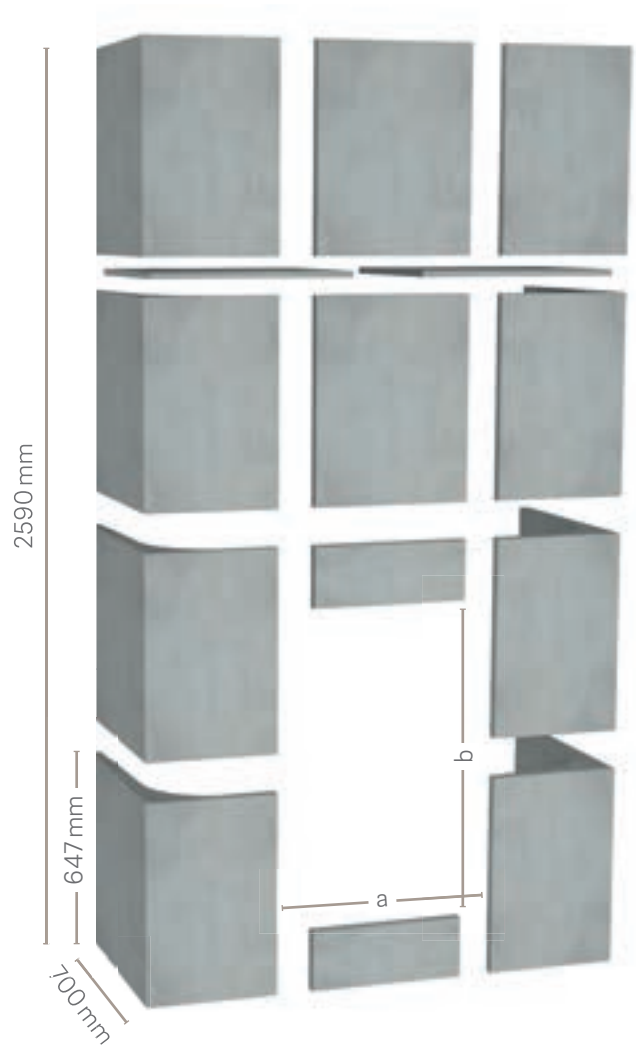
Model: Kristall

Nominal output: 9 kW

# Camina Storage Block Stone

This storage blocks can be combined so that the desired fireplace insert almost disappears in the resulting wall and a natural stone system or individual cladding can be installed for the insert in front of it.

Using this finished wall saves an enormous amount of time. You can choose from a broad range of natural stone systems for installation.



## Size chart

Total width		1350 mm	1550 mm	1850 mm
Measurements: a x b		500 x 904 mm	700 x 904 mm	1000 x 904 mm
Fireplace insert width	450 mm	✓	-	-
	550 mm	-	✓	-
	670 mm	-	✓	-
	730 mm	-	-	✓
	870 mm	-	-	✓
	1000 mm	-	-	✓





**N3**



Measurements: W 1450 x H 1160 x D 300 mm  
 Natural stone: Blanco Nacarado with Habana  
 Fireplace insert: Lina 7357 h with frame  
 Model: Kristall  
 Nominal output: 9 kW



The Carmina storage blocks made of reinforced storage concrete still store the radiated heat of the fireplace and gently give it off for many hours after combustion. The component set consist of 14 individual parts with a tongue-and-groove design, including adhesive.



**N8**



**A**

Measurements: W 1170 x H 970 x D 120 mm

Natural stone: Negro Abanilla

Fireplace insert: Lina 6751 h

Model: Kristall

Nominal output: 9 kW



### N8 (Custom made model - additional sizes on request)



Measurements: W 1450 x H 970 x D 120 mm

Natural stone: Negro Abanilla

Fireplace insert: Lina 10051 h

Model: Kristall

Nominal output: 10 kW



### N9



Measurements: W 1150 x H 1200 x D 280 mm

Natural stone: Caliza Moka with Negro Abanilla

Fireplace insert: Lina 5557 h

Model: Kristall

Nominal output: 7 kW



**N10**



Measurements: W 900 x H 1055 x D 150 mm  
 Natural stone: Negro Abanilla  
 Fireplace insert: Lina 4557 h  
 Model: Kristall  
 Nominal output: 7 kW



**N11**



Measurements: W 1200 x H 1275 x D 280 mm  
 Natural stone: Caliza Moka  
 Fireplace insert: Lina 6780 h with frame  
 Model: Kristall  
 Nominal output: 9 kW



**N12**



Measurements: W 1300 x H 1140 x D 300 mm  
 Natural stone: Caliza Moka  
 Fireplace insert: Lina 7363 h with frame  
 Model: Kristall  
 Nominal output: 9 kW



**N13**



Measurements: W 1440 x H 1090 x D 300 mm  
 Natural stone: Travertino Romano  
 Fireplace insert: Lina 7363 h with frame  
 Model: Kristall  
 Nominal output: 9 kW



**N14**



Measurements: W 1300 x H 1147 x D 470 mm  
 Natural stone: Rojo Alicante  
 Fireplace insert: Pano 6757 h  
 Model: Anthracite  
 Nominal output: 9 kW



**N16**



Measurements: W 1330 x H 1120 x D 380 mm  
 Natural stone: Crema Marfil  
 Fireplace insert: Lina 7363 h with frame  
 Model: Kristall  
 Nominal output: 9 kW



**N17**



Measurements: W 1360 / 1130 x H 1120 x D 300 mm  
 Natural stone: Arenisca San Miguel  
 Fireplace insert: Ekko R 67(45)57 h  
 Model: Kristall  
 Nominal output: 9 kW



**N18**



Measurements: W 1100 x H 1025 x D 400 mm  
 Natural stone: Crema Marfil  
 Fireplace insert: Pano 5557 h  
 Model: Anthracite  
 Nominal output: 7 kW

**N19**



Measurements: W 1100 x H 1160 x D 300 mm  
Natural stone: Travertino Romano  
Fireplace insert: Lina 4557 h  
Model: Kristall  
Nominal output: 7 kW





**N20**



Measurements: W 1240 x H 1430 x D 300 mm

Natural stone: Arenisca San Miguel

Fireplace insert: Lina 6780 h with frame

Model: Kristall

Nominal output: 9 kW



**N21**



Measurements: W 1320 x H 1210 x D 250 mm

Natural stone: Rojo Alicante with Crema Marfil

Fireplace insert: Lina 6757 s

Model: Kristall

Nominal output: 9 kW

**N22**



Measurements: W 1300 x H 1130 x D 300 mm  
Natural stone: Blanco Carrara  
Fireplace insert: Lina 7363 h with frame  
Model: Kristall  
Nominal output: 9 kW







**N23**



Measurements: W 970/970 x H 1095 x D 230 mm

Natural stone: Caliza Moka

Fireplace insert: Ekko 45(45)57 h

Model: Kristall

Nominal output: 7 kW



A timeless design in natural colors and the wonderful presence of the natural stone grown in millions of years, embodied in an elegant noble piece of lifestyle.



**N24 (Amberes)**     

Measurements: W 1450 x H 1340 x D 450 mm  
 Natural stone: Arenisca San Miguel  
 Fireplace insert: Lina 7363 h with frame  
 Model: Kristall  
 Nominal output: 9 kW



**N25 (Atlanta)**     

Measurements: W 1760 x H 1278 x D 470 mm  
 Natural stone: Blanco Carrara  
 Fireplace insert: Lina 8757 h with frame  
 Model: Kristall  
 Nominal output: 10 kW



**N26 (Bruselas)**     

Measurements: W 1250 x H 1015 x D 250 mm  
 Natural stone: Crema Marfil  
 Fireplace insert: Lina 7363 h with frame  
 Model: Kristall  
 Nominal output: 9 kW



**N27 (Burgos)**     

Measurements: W 1250 x H 1035 x D 280 mm  
 Natural stone: Crema Marfil  
 Fireplace insert: Lina 7363 h with frame  
 Model: Kristall  
 Nominal output: 9 kW



**N28 (Celine)**     

Measurements: W 1260 x H 1050 x D 200 mm  
 Natural stone: Caliza Moka  
 Fireplace insert: Lina 7363 h with frame  
 Model: Kristall  
 Nominal output: 9 kW



**N29 (Merida)**     

Measurements: W 1300 x H 1100 x D 250 mm  
 Natural stone: Crema Marfil  
 Fireplace insert: Lina 7363 h with frame  
 Model: Kristall  
 Nominal output: 9 kW



**N30 (Nat)**     

Measurements: W 1250 x H 1150 x D 200 mm  
 Natural stone: Blanco Nacarado  
 Fireplace insert: Lina 6757 h  
 Model: Kristall  
 Nominal output: 9 kW



**N31 (Oslo)**     

Measurements: W 1350 x H 1240 x D 380 mm  
 Natural stone: Caliza Moka  
 Fireplace insert: Lina 7363 h with frame  
 Model: Kristall  
 Nominal output: 9 kW



**N32 (Oxford)**     

Measurements: W 1300 x H 1070 x D 350 mm  
Natural stone: Rosa Crema  
Fireplace insert: Lina 7363 h with frame  
Model: Kristall  
Nominal output: 9 kW



**N33 (Paris)**     

Measurements: W 1400 x H 1230 x D 350 mm  
Natural stone: Rosa Claro  
Fireplace insert: Lina 7363 h with frame  
Model: Kristall  
Nominal output: 9 kW



**N34 (Pisa)**     

Measurements: W 1400 x H 1100 x D 300 mm  
Natural stone: Rosa Crema  
Fireplace insert: Lina 7363 h with frame  
Model: Kristall  
Nominal output: 9 kW



**N35 (Praga)**     

Measurements: W 1230 x H 1100 x D 250 mm  
Natural stone: Blanco Carrara  
Fireplace insert: Lina 7363 h with frame  
Model: Kristall  
Nominal output: 9 kW



**N36 (Preston)**   

Measurements: W 1760 x H 1336 x D 470 mm

Natural stone: Rosa Claro

Fireplace insert: Lina 10057 h with frame

Model: Kristall

Nominal output: 10 kW



### N37 (Riga)



Measurements: W 1300 x H 1070 x D 250 mm  
 Natural stone: Crema Marfil  
 Fireplace insert: Lina 7363 h with frame  
 Model: Kristall  
 Nominal output: 9 kW



### N38 (Verona)



Measurements: W 1550 x H 1200 x D 350 mm  
 Natural stone: Blanco Macael  
 Fireplace insert: 10057 h with frame  
 Model: Kristall  
 Nominal output: 10 kW



### N39 (Viena)



Measurements: W 1500 x H 1240 x D 300 mm  
 Natural stone: Blanco Carrara  
 Fireplace insert: Lina 7363 h with frame  
 Model: Kristall  
 Nominal output: 9 kW



### N40 (Washington)



Measurements: W 1500 x H 1120 x D 370 mm  
 Natural stone: Arenisca San Miguel  
 Fireplace insert: Lina 7363 h with frame  
 Model: Kristall  
 Nominal output: 9 kW



N9    

Measurements: W 1150 x H 1200 x D 280 mm  
Natural stone: Caliza Moka with Negro Abanilla  
Fireplace insert: Lina 5557 s  
Model: Kristall  
Nominal output: 7 kW

**L-Banco Wide**   **A**

Measurements: W 1600 x H 1300 x D 440 mm  
Natural stone: Negro Abanilla  
Fireplace insert: Lina 10051 h  
Model: Kristall  
Nominal output: 10 kW







## Camina natural stone appliances (modern)

Natural stone appliances in  
a modern design

# Modern mantel- pieces out of natural stone

## Valuable handiwork.

Under the term „natural stone modern“ we show new highlights from Camina in terms of fireplace design and its range.

Exclusively and in the trend of the times we give the six specific types of natural stone, which are available for these Camina systems. We also offer the modern fireplace façades in a smaller format, when lower heating requirements are necessary.

You will find further information on our website:  
[www.camina-schmid.de](http://www.camina-schmid.de)



# The variety of natural stone

Natural stone is, as the name already denotes, a product which has formed in the natural world over millions of years, to which we can ,only' add the shape and the final touches. Deviations in the colour, structure and pattern are therefore perfectly normal. This means that any system produced from it is a unique specimen, which further underlines the true value of this product.

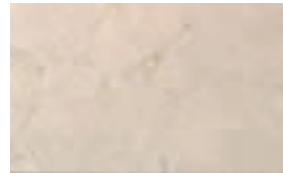
## Marble (unpolished / smoothed surface)



Blanco Nacarado



Celia\*



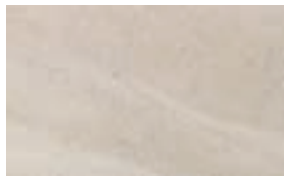
Crema Marfil



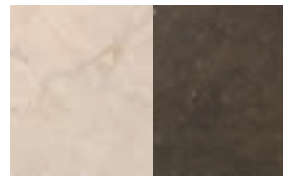
Habana



Negro Abanilla\*



Ramage



Bicolour\*

Additional natural stone variants are available on request!

Please note! Deviations in colour, structure and pattern to the sample are perfectly normal!

\* Surcharge



### L Wide



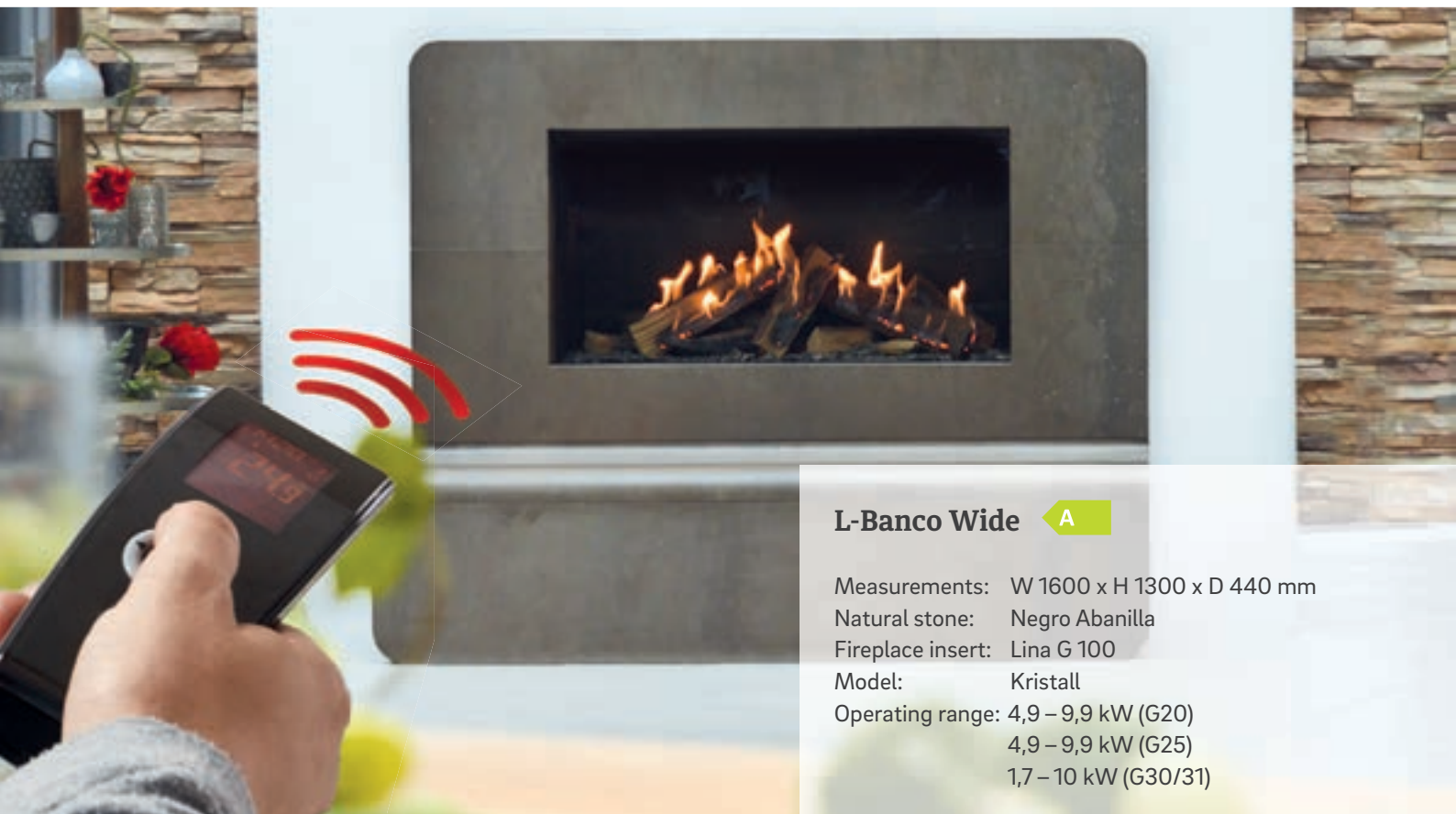
Measurements: W 1600 x H 1300 x D 440 mm

Natural stone: Habana

Fireplace insert: Lina 10051 h with frame

Model: Kristall

Nominal output: 10 kW



### L-Banco Wide



Measurements: W 1600 x H 1300 x D 440 mm

Natural stone: Negro Abanilla

Fireplace insert: Lina G 100

Model: Kristall

Operating range: 4,9 – 9,9 kW (G20)

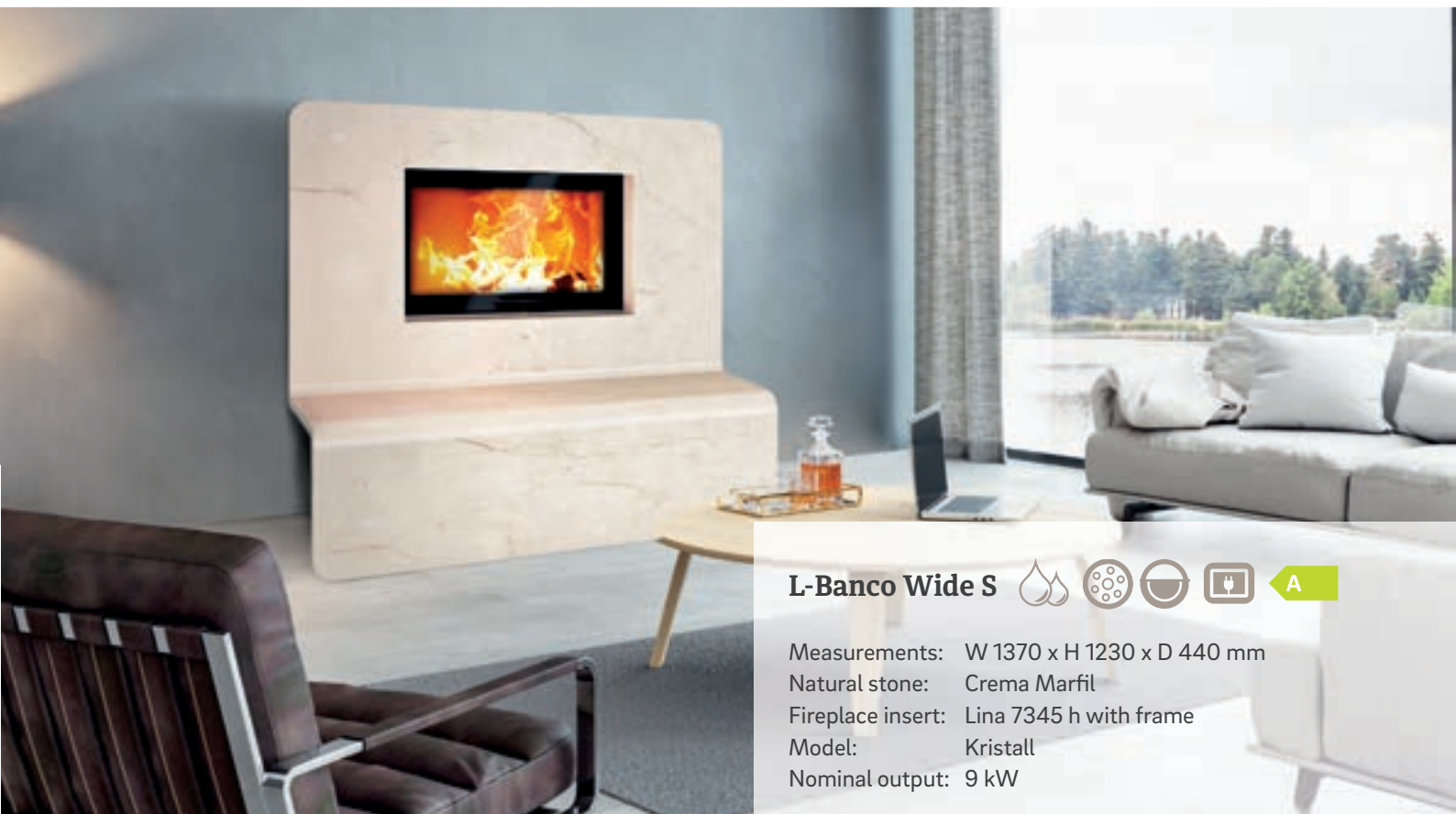
4,9 – 9,9 kW (G25)

1,7 – 10 kW (G30/31)

## L Wide S



Measurements: W 1370 x H 870 x D 440 mm  
Natural stone: Blanco Nacarado  
Fireplace insert: Lina 7345 h with frame  
Model: Kristall  
Nominal output: 9 kW



## L-Banco Wide S



Measurements: W 1370 x H 1230 x D 440 mm  
Natural stone: Crema Marfil  
Fireplace insert: Lina 7345 h with frame  
Model: Kristall  
Nominal output: 9 kW

## Cubic



A

Measurements: W 1200 x H 1200 x D 275 mm

Natural stone: Negro Abanilla

Fireplace insert: Lina 6757 s

Model: Kristall

Nominal output: 9 kW





## Modis Wide

Measurements: W 1800 x H 1230 x D 200 mm

Natural stone: Negro Abanilla with Blanco Nacarado

Fireplace insert: Lina 10051 h with frame

Model: Kristall

Nominal output: 10 kW



## Modis Wide S

Measurements: W 1500 x H 1010 x D 154 mm

Natural stone: Celia with Blanco Nacarado

Fireplace insert: Lina 7345 h with frame

Model: Kristall

Nominal output: 9 kW



The modern, stylish facades are produced with high-tech machines. Here the work-piece is cut from solid material with water jet technology.

**Moon Wide**   

Measurements: W 1900 x H 1100 x D 120 mm

Natural stone: Celia with Negro Abanila

Fireplace insert: Lina 10057 h with frame

Model: Kristall

Nominal output: 10 kW







## Moon Wide S








Measurements: W 1500 x H 950 x D 120 mm  
Natural stone: Negro Abanila with Blanco Nacarado  
Fireplace insert: Lina 7345 h with frame  
Model: Kristall  
Nominal output: 9 kW










## Bicoloured

The two-colour natural stone facades are put together in a combination of harmoniously matched types of marble. The transitions are fabricated for a perfect fit to provide a jointless appearance.

## Technical accessories – Overview

Model versions	Top-mounted water boilers 	Hydronic fireplaces 	Heat storage system 	Top-mounted flue gas heat exchanger 	Electrical door drive 	External fuel door 	Tunnel version 
<b>Heat storage appliances</b>							
S2	-	-	-	-	-	-	-
S3	-	-	-	-	-	-	-
S4 Front / Corner (with straight apron)	✓	-	✓	-	-	✓	-
S4 Front / Corner (with inclined apron)	-	-	-	-	-	✓	-
S5 Front / Corner	✓	-	✓	-	-	✓	-
S7 Low	-	-	-	-	-	-	✓
S7 High	-	✓ (only Lina W 6751 s)	✓ (only with 3 storage rings)	-	-	-	✓
S7 TV High Powerbloc	-	-	-	-	-	-	✓
S9 Low	-	-	-	-	-	✓	-
S9 High	-	-	✓	-	-	✓	-
S9 Maxi	-	-	-	-	-	✓	-
S10 Low	-	-	-	-	-	✓	-
S10 High	-	✓	✓	-	-	✓	-
S11	-	✓	-	-	-	✓	-
S12 Low	-	-	-	-	-	-	-
S12 G Low	-	-	-	-	-	-	-
S12 High	-	-	-	-	-	-	-
S12 G High	-	-	-	-	-	-	-
S13	-	-	✓ (only with 3 storage rings)	-	-	-	-
S13 G	-	-	-	-	-	-	-
S14	-	-	-	-	-	-	-
S15	-	-	-	-	-	-	-
S16	-	-	-	-	-	-	-
S16 G	-	-	-	-	-	-	-
S17	-	-	-	-	-	-	-
S18 – Retro	-	-	-	-	✓	-	-
S19 – Retro	-	-	-	-	-	-	-
S20 – Retro	-	-	-	-	-	-	-
S21 GO-Line	-	-	-	-	-	-	-
S22 GO-Line	-	-	-	-	-	-	-
<b>Natural stone appliances (classic)</b>							
N1	✓	✓	✓	✓	✓	✓	✓
N2	✓	✓	✓	✓	✓	✓	✓
N3	✓	-	✓	✓	✓	✓	✓
N5	✓	✓	✓	✓	✓	✓	✓
N8	✓	✓	✓	✓	✓	✓	✓
N9	✓	-	✓	✓	-	✓	✓

## Technical accessories - Overview

Model versions	Top-mounted water boilers 	Hydronic fireplaces 	Heat storage system 	Top-mounted flue gas heat exchanger 	Electrical door drive 	External fuel door 	Tunnel version 
<b>Natural stone appliances (classic)</b>							
N10	✓	–	✓	✓	–	✓	✓
N11	–	–	–	–	✓	✓	✓
N12	✓	✓	✓	✓	✓	✓	✓
N13	✓	✓	✓	✓	✓	✓	✓
N14	✓	–	✓	✓	✓	✓	✓
N16	✓	✓	✓	✓	✓	✓	✓
N17	–	–	–	✓	✓	✓	–
N18	✓	–	✓	✓	–	✓	–
N19	✓	–	✓	✓	–	✓	✓
N20	–	–	–	–	✓	✓	✓
N21	✓	–	✓	✓	✓	✓	✓
N22	✓	✓	✓	✓	✓	✓	✓
N23	–	–	–	✓	–	✓	–
N24 (Amberes)	✓	✓	✓	✓	✓	✓	✓
N25 (Atlanta)	✓	–	✓	✓	✓	✓	✓
N26 (Bruselas)	✓	✓	✓	✓	✓	✓	✓
N27 (Burgos)	✓	✓	✓	✓	✓	✓	✓
N28 (Celine)	✓	✓	✓	✓	✓	✓	✓
N29 (Merida)	✓	✓	✓	✓	✓	✓	✓
N30 (Nat)	✓	–	✓	✓	✓	✓	✓
N31 (Oslo)	✓	✓	✓	✓	✓	✓	✓
N32 (Oxford)	✓	✓	✓	✓	✓	✓	✓
N33 (Paris)	✓	✓	✓	✓	✓	✓	✓
N34 (Pisa)	✓	✓	✓	✓	✓	✓	✓
N35 (Praga)	✓	✓	✓	✓	✓	✓	✓
N36 (Preston)	–	–	–	✓	✓	✓	✓
N37 (Riga)	✓	✓	✓	✓	✓	✓	✓
N38 (Verona)	–	–	–	✓	✓	✓	✓
N39 (Viena)	✓	✓	✓	✓	✓	✓	✓
N40 (Washington)	✓	✓	✓	✓	✓	✓	✓
<b>Natural stone appliances (modern)</b>							
Cubic	✓	–	✓	✓	✓	✓	✓
L-Banco Wide	–	–	–	✓	✓	✓	✓
L-Banco Wide S	✓	–	✓	✓	✓	✓	✓
L Wide	–	–	–	✓	✓	✓	✓
L Wide S	✓	–	✓	✓	✓	✓	✓
Modis Wide	–	–	–	✓	✓	✓	✓
Modis Wide S	✓	–	✓	✓	✓	✓	✓
Moon Wide	–	–	–	✓	✓	✓	✓
Moon Wide S	✓	–	✓	✓	✓	✓	✓

# Become familiar with and plan Camina systems online!



You'll find videos, explanations and the  
3D fireplace planner at:

[www.camina-schmid.de](http://www.camina-schmid.de)

## We would be happy to offer you our advice!

Stamp

**Camina**  **Schmid**

**Camina & Schmid Feuerdesign und Technik  
GmbH & Co. KG**

Gewerbepark 18  
DE-49143 Bissendorf

Tel. +49 5402-70 10 10  
Fax +49 5402-70 10 70

[www.camina-schmid.de](http://www.camina-schmid.de)  
[info@camina-schmid.de](mailto:info@camina-schmid.de)



Made in Germany



Award-winning quality

