




Installation guide

This guide will walk you through the process of installing your Navmii Tracker in minutes.



 **Setup your account**

 **Plug in the device**

 **Configuration**

 **Anytime, anywhere!**

 **navmii**tracker



User:

Password:

Language:

Remember

[Login as](#) | [Forgot your password?](#)

© Navmii UK Ltd 2021

Enter

Setup your account

Setup your account by following the steps provided within your "Welcome to Navmii Tracker" email.





Plug in the device

Plug the device into your OBD port.

Where is my OBD port?

OBD interfaces are standardised across the EU. The port can usually be located around the driver side footwell.

Alternatively it can be found:

- Passenger footwell underneath the dashboard
- Inside or underneath the glove compartment
- Central console area
- The area between the steering wheel and centre console
- The area between the steering wheel and driver door

If you are still having trouble to locate the port please refer to your vehicle's hand book and it will identify where it's located.

If you are still having difficulty please contact us at:

support@navmiitracker.com



A close-up photograph of the front left headlight and grille of a dark-colored car. A white dashed circular border is drawn around the headlight area, with the text '30 min' centered inside it. The background is a blurred outdoor scene with a road and other vehicles.

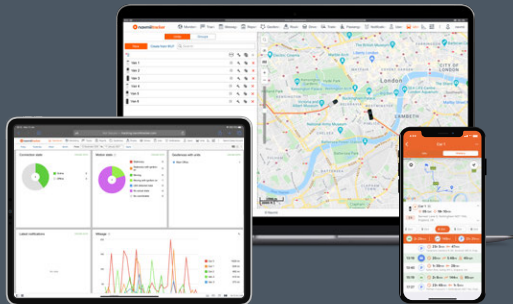
30
min

Configuration

After your first drive the device will automatically configure and will be live within 30 minutes.

The vehicle will show on the map view with its current location.





Anytime, anywhere!

You are all set! You can download Navmii Tracker on any Android or iOS device to monitor your vehicle 365 days a year.





We would be happy to discuss your needs in detail and answer any of your questions.

If you are in doubt about any stage of the installation process please contact us at support@navmiitracker.com