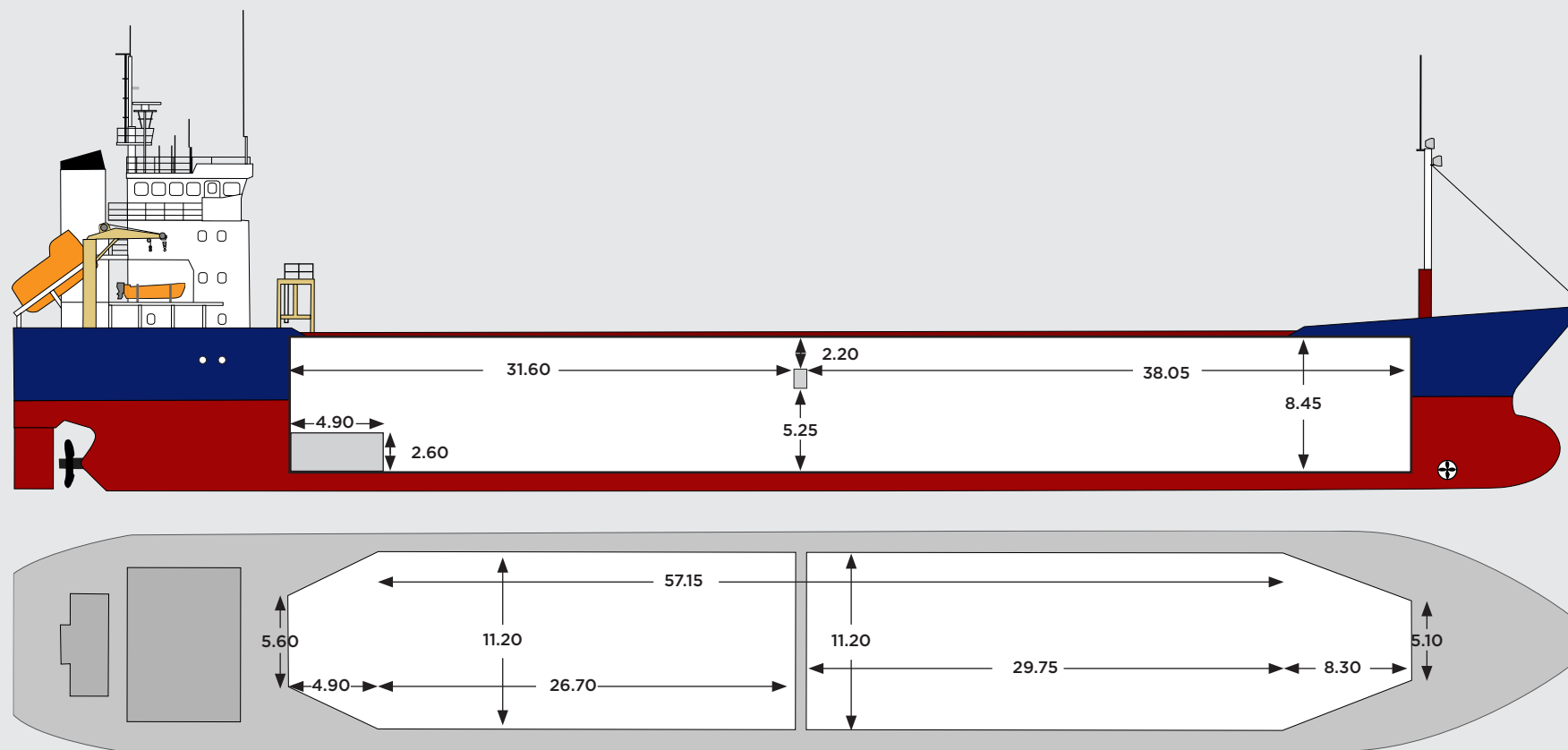




AtoB@C Shipping



NORDLAND

Built	2003
IMO number	9281786
Call sign	YLRJ
Class	Registro Italiano Navale C General cargo ship - Double side-skin - Equipped for carriage of containers; Heavy cargo; AUT-UMS; Dangerous goods; Grabloading
Ice class	1A
Flag	Latvia
Port of registry	Riga
DWT	4,516
DWCC	abt. 4,200 mt (summer) / abt. 4,100 (winter)

GT / NT	3,173 / 1,725
LOA	98.90 m
LBPP	92.55 m
Beam	13.80 m
Moulded depth	7.4 m (abt.)
Draft	5.74 m (abt.)
Height wl-hc	
Airdraft from keel	30.20 m (keel to mast)
Main engine	1 x MaK 6M32C, 2,880 kW
Bow thruster	yes
Hatches	pontoon type

Holds	1 box-shaped hold, fixed strongbeam 2 movable bulkheads Transferable to tweendeck (16.2 m)
Hold dimensions	70.35 x 11.20 x 8.45 metres
Cubic capacity	6,372 m ³ / 225,100 cbft (grain)
Container intake	234 TEU
Deck load	1.65 mt/m ²
Tanktop strength	15.0 mt/m ² (tweendeck 2.50 mt/m ²)

Particulars are given in good faith but without guarantee.