

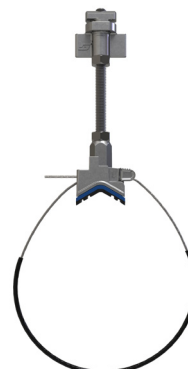
Height Adjustable Universal Clamp



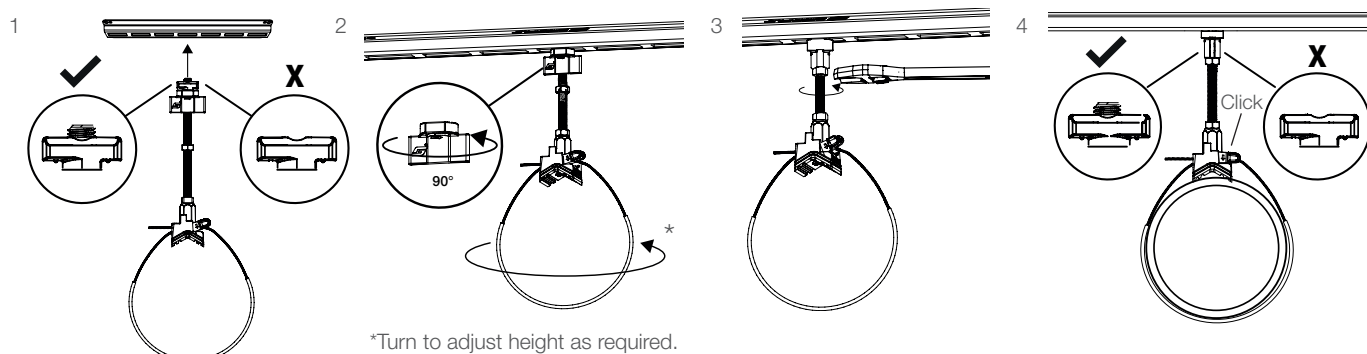
Quick install pipe clamp solution which enables installation at varying heights from the bracket; ideal for instances where different sized pipes require aligning along the centre axis.

FEATURES / BENEFITS

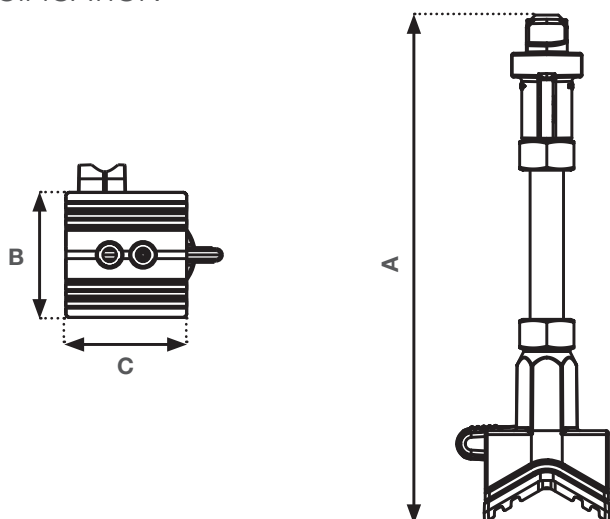
- **Finite adjustment** – make height adjustments to suit exact requirements of the installation
- **Quick installation** – simple quarter turn attachment to bracket; no requirement to cut threaded rod to multiple different lengths
- **Versatile** – enables pipes of different sizes to be installed along the centre axis and condensate pipes to be installed at a gradient for drainage
- **Universal** – replaces more than 13 different pipe ring sizes
- **Practical** – easy site storage, reduces waste
- **Ready-to-use** – supplied as a kit, with 100 mm length of rod, M8 nuts, QT Accessory and Gripple Universal Clamp



INSTALLATION & ADJUSTMENT

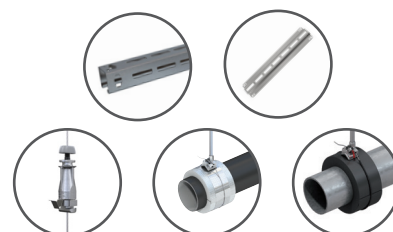


SPECIFICATION



Dimension	(mm)
A	121
B	30
C	29

RELATED PRODUCTS



For more options on suspension methods please contact us or visit www.gripple.com

SUBMITTAL INFORMATION

Load rating:

Max. 75 kg @ 3:1 safety factor
Vertical loads only

Material:

QT accessory - Ezak alloy
Housing - Type ZA2 zinc
Wedge - Sintered steel hardened to min. 56 Rockwell C
Spring - Stainless Steel
Pad - EDPM 4015 Shore A

Approvals:

Lloyds certified
TUV tested
APAVE tested