

# QT Compact Clamp



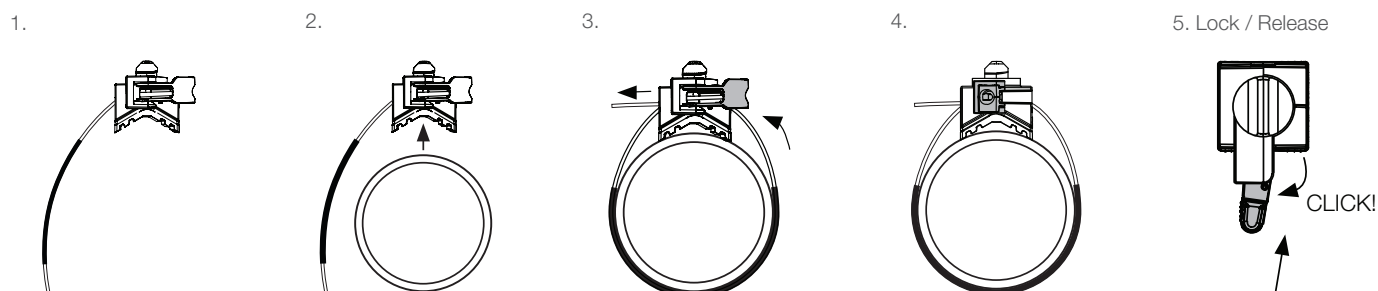
Used in conjunction with Grippler Brackets for quick and easy support of all types of pipework within mechanical and plumbing services.

## FEATURES / BENEFITS

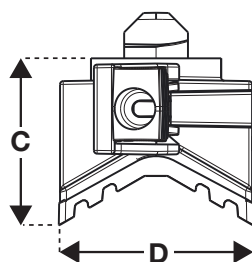
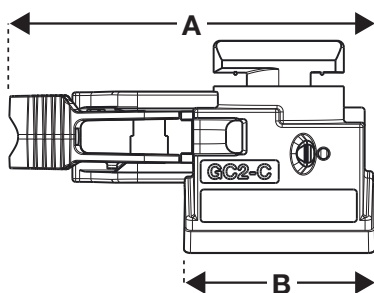
- **Quick** – up to ten times faster than traditional methods due to integral mounting pillar and quarter turn attachment to Grippler Brackets
- **Simple** – no tools required for installation
- **Universal** – replaces 13 different pipe hanger sizes, suitable for all pipe sizes from 15 mm copper to 6" steel OD
- **Robust** – retractable sleeve, pre-fitted to wire rope to prevent galvanic corrosion
- **Versatile** – a variety of rubber pads provide insulation against vibration (noise reduction > 23 db)
- **Strong** – 75 kg SWL with a 3:1 safety factor
- **Compatible** – available with Kooltherm / Armaflex pipe collars for insulated pipes
- **Safe** – supplied in ready-to-use kits with Grippler Brackets for easy site storage and waste reduction



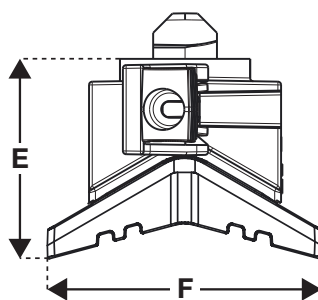
## INSTALLATION



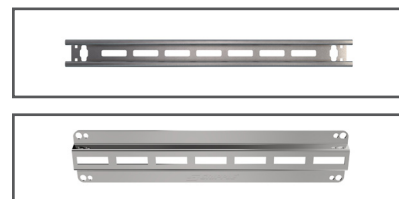
## SPECIFICATION



Dimension	Size (mm)
A	56
B	29.5
C	22
D	30
E (Large Pad)	27
F (Large Pad)	40



## AVAILABLE BRACKETS



Brackets are available in multiple sizes. For more information please contact us or visit [www.grippler.com](http://www.grippler.com)

## SUBMITTAL INFORMATION

**Load Rating:**  
75 kg @ 3:1 safety factor

**Material:**  
**Housing** - Type ZA2 Zinc  
**Wedge** - Sintered steel hardened to min. 56 Rockwell C  
**Spring** - Stainless Steel (Type 302)  
**Pad** - EPDM 4015 Shore A

**Approvals:**  
Lloyds certified  
TUV tested  
APAVE tested

