

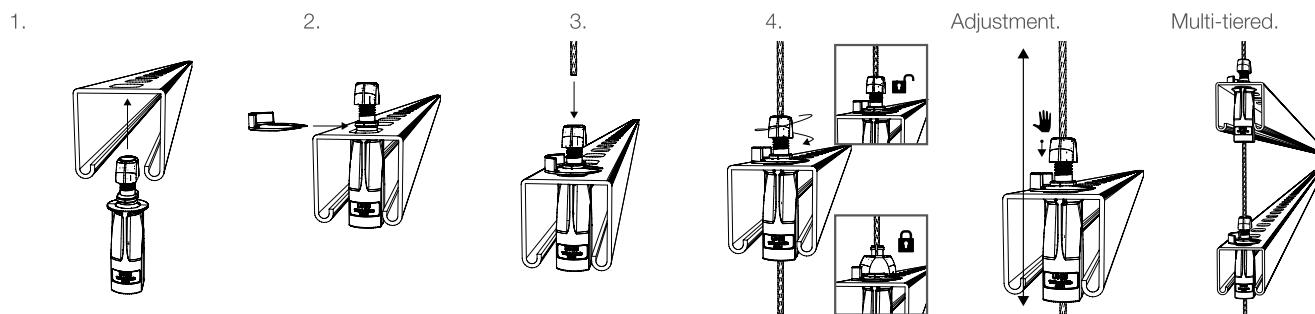
The next generation of wire rope suspension products designed for the fast suspension of cable containment, pipework, ductwork, HVAC systems and modules including multi-tier installations.

FEATURES / BENEFITS

- **Quick** – up to 6 times faster than traditional suspension systems
- **Safe** – can be pre-installed to channel using pre-fitted washer/nut or using retention clip, reducing time working at height
- **Easy** – integral ergonomically designed release button allows for simple adjustment
- **Secure** – button acts as a locking screw and indicator clearly highlights the wire is locked in position for ultimate security
- **Versatile** – variety of foot attachments available to suit applications
- **Strong** – highest load rating capability to date; up to 250 kg with 5:1 SWL

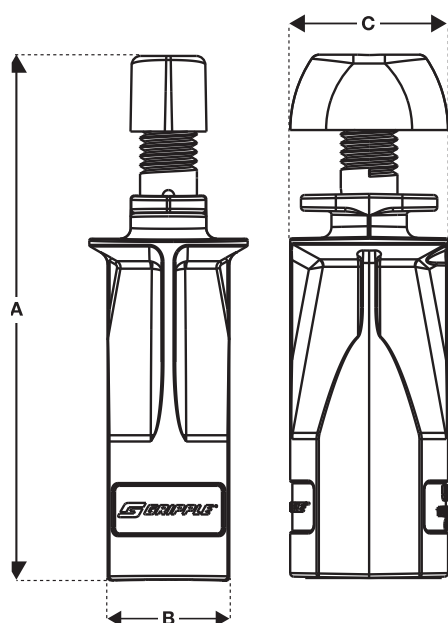


INSTALLATION & ADJUSTMENT



Maximum off axis suspension = 15° (unless otherwise specified by Gripple Technical Services)

SPECIFICATION



No. 2	Dimension	A	B	C
	mm	55	17	20

No. 3	Dimension	A	B	C
	mm	73	17	22

No. 4	Dimension	A	B	C
	mm	115 *	22	30

*Includes 25 mm M12 thread

AVAILABLE END FIXINGS



For more options on available end fixings please contact us or visit www.gripple.com

SUBMITTAL INFORMATION

Load Rating:

No. 2 - 55 kg @ 5:1
No. 3 - 110 kg @ 5:1
No. 4 - 250 kg @ 5:1

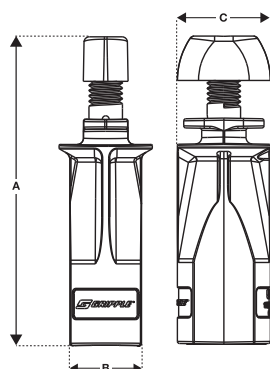
Material:

Housing - Type ZA2 Zinc
Carriage - Acetal Copolymer
Wedge - Sintered steel hardened to min. 56 Rockwell C
Button - Acetal Copolymer

UniGrip – Standard



SPECIFICATION



No. 2	Dimension	A	B	C
	mm	55	17	20

No. 3	Dimension	A	B	C
	mm	73	17	22

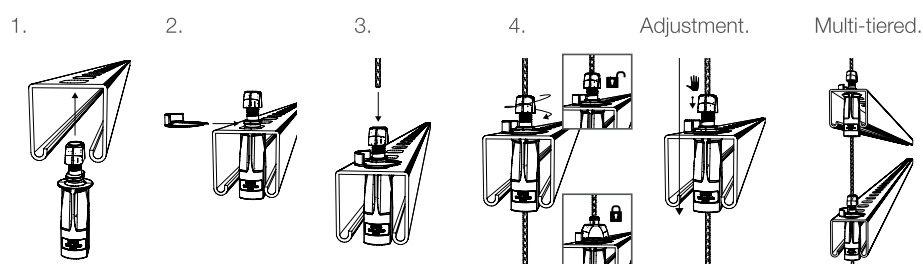
Foot Material	End Cap – PP (Polypropylene)			
---------------	------------------------------	--	--	--

Clip Material	Retention Clip – PP (Polypropylene)			
---------------	-------------------------------------	--	--	--

OVERVIEW

- Designed for non-mechanical fixing through brackets
- Supplied with retention clip for pre-fabrication applications
- Central wire exit

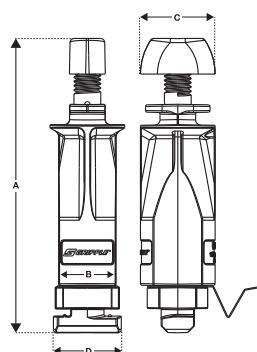
INSTALLATION



UniGrip – QT



SPECIFICATION



No. 2	Dimension	A	B	C	D
	mm	69	17	20	20

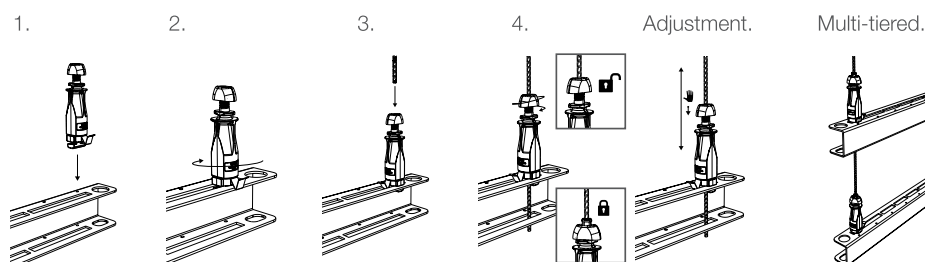
No. 3	Dimension	A	B	C	D
	mm	87	17	22	20

Foot Material	QT (Quick Twist) Adaptor – Zinc Alloy (EN12844 ZP2)			
	Spring Clip – Stainless Spring Steel BS5770 301 S21			

OVERVIEW

- Designed for use with Grippler Universal Brackets
- Quarter turn installation, no mechanical fix required
- Safety clip for added security
- Central wire exit

INSTALLATION



PI-UNIGRIP-ENG

www.grippler.com

Grippler's policy is one of continuous development and innovation. We therefore reserve the right to alter specifications, etc. without notice.

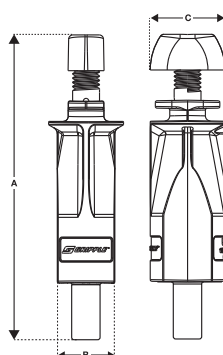


Grippler Ltd | The Old West Gun Works | Savile Street East | Sheffield S4 7UQ
Tel 0800 018 4264 Fax 0114 275 1155 Email info@grippler.com

UniGrip – Central Exit



SPECIFICATION

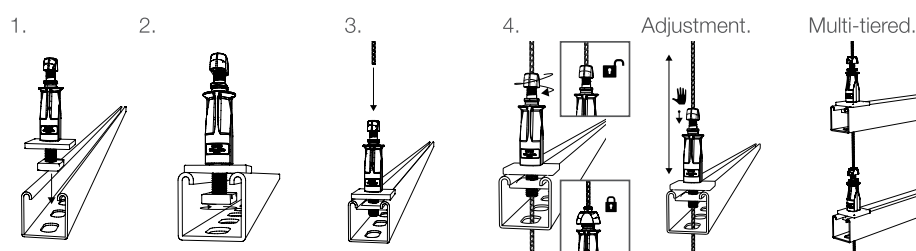


No. 2	Dimension	A	B	C
	mm	81	17	20
No. 3	Dimension	A	B	C
	mm	99	17	22
No. 4	Dimension	A	B	C
	mm	115	22	30
Foot Material	Thread – Mild Steel (Type EN1A) - Bright Zinc Plated			

OVERVIEW

- Designed for services suspended with channel
- Supplied with either a square washer and channel nut or hex nut
- 25 mm male thread for mechanical fixing
- Thread sizes - M8 (UniGrip No. 2), M10 (UniGrip No. 3) and M12 (UniGrip No. 4)
- Central wire exit

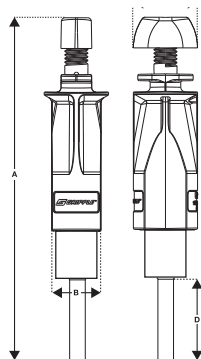
INSTALLATION



UniGrip – Side Exit



SPECIFICATION

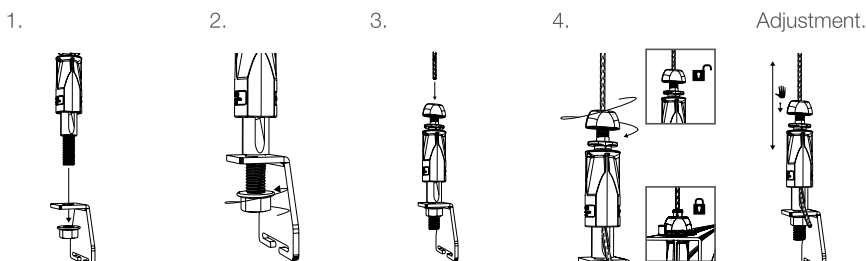


No. 2	Dimension	A (M6)	A (M8)	B	C	D (M6)	D (M8)
	mm	93	98	17	20	20	25
No. 3	Dimension	A (M6)	A (M8)	B	C	D (M6)	D (M8)
	mm	111	116	17	22	30	35
Foot Material	Thread – Mild Steel (Type EN1A) - Bright Zinc Plated						

OVERVIEW

- Designed for applications in which wire cannot exit centrally (avoiding clashes with services)
- Supplied with a hex nut
- Side wire exit

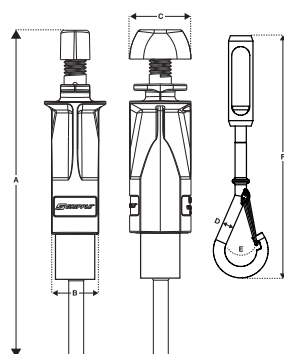
INSTALLATION



UniGrip – Calibra



SPECIFICATION



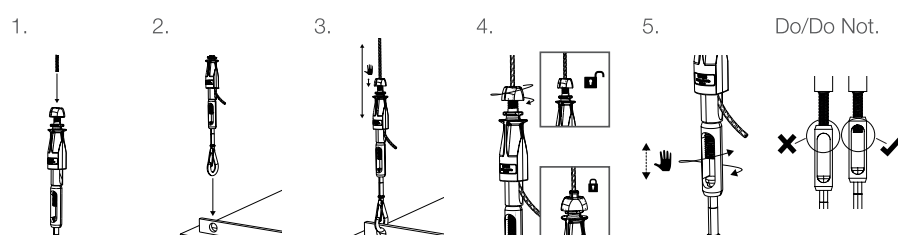
No. 2	Dimension	A	B	C	D	E	F
	mm	55	17	20	7	8	134

Foot Material	Thread – Mild Steel (Type EN1A) - Bright Zinc Plated Turnbuckle – Mild Steel (Type EN1A) - Bright Zinc Plated Crimped Pin – Mild Steel (Type EN1A) - Bright Zinc Plated Snap Hook – Mild Steel (Type EN1A) - Bright Zinc Plated
---------------	--

OVERVIEW

- Designed for adjustment of building services under load
- 35 mm of finite adjustment using integral adjustment pillar and M8 thread
- Side wire exit

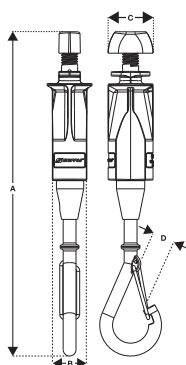
INSTALLATION



UniGrip – Hook



SPECIFICATION



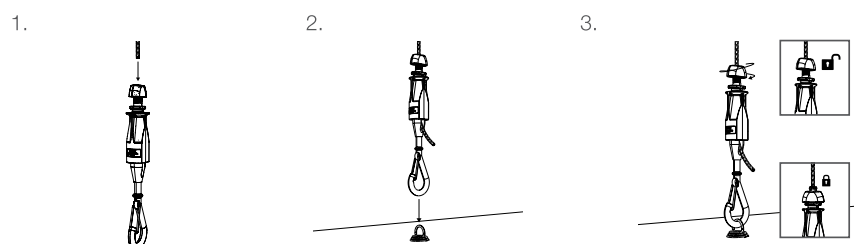
No. 2	Dimension	A	B	C	D
	mm	141	17	20	7

Foot Material	Hook Adaptor – Mild Steel (Type EN1A) - Bright Zinc Plated
---------------	--

OVERVIEW

- Self closing latch for security
- Designed for heating/cooling panels and light fittings
- Side wire exit

INSTALLATION



PI-UNIGRIP-ENG

www.gripple.com

Gripple's policy is one of continuous development and innovation. We therefore reserve the right to alter specifications, etc. without notice.

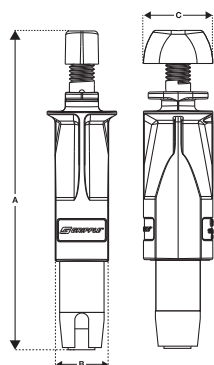


Gripple Ltd | The Old West Gun Works | Savile Street East | Sheffield S4 7UQ
Tel 0800 018 4264 Fax 0114 275 1155 Email info@gripple.com

UniGrip – Y-Fit



SPECIFICATION

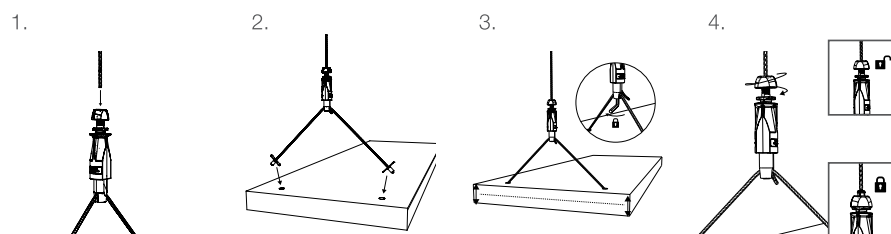


No. 2	Dimension	A	B	C
	mm	80	17	20
No. 3	Dimension	A	B	C
	mm	96	17	22
Foot Material		Y-Fit Adaptor – Mild Steel (Type EN1A) - Bright Zinc Plated Grub Screw – Mild Steel (Type EN1A) - Bright Zinc Plated		

OVERVIEW

- Designed for lighting or containment
- Dual fixing points for balance
- 150 mm, 300 mm and 500 mm leg lengths as standard
- Legs available with a variety of wire end fixings eg. Toggle, Snap Hook etc.
- Side wire exit

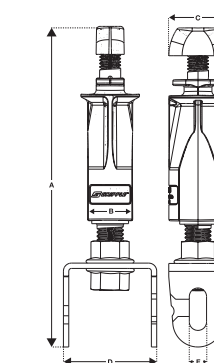
INSTALLATION



UniGrip – Cable Basket Adaptor



SPECIFICATION

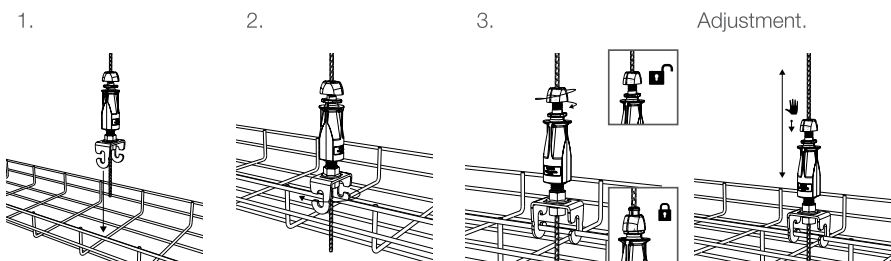


No. 2	Dimension	A	B	C	D	E
	mm	81	17	20	35	7
Foot Material		Thread – Mild Steel (Type EN1A) - Bright Zinc Plated Cable Basket Adaptor – Steel S450GD				

OVERVIEW

- Designed for fast suspension of cable baskets (up to 6 mm thickness)
- Eliminates requirement for channel bearers
- Central wire exit

INSTALLATION



PI-UNIGRIP-ENG

www.gripple.com

Gripple's policy is one of continuous development and innovation. We therefore reserve the right to alter specifications, etc. without notice.



Gripple Ltd | The Old West Gun Works | Savile Street East | Sheffield S4 7UQ
Tel 0800 018 4264 Fax 0114 275 1155 Email info@gripple.com